

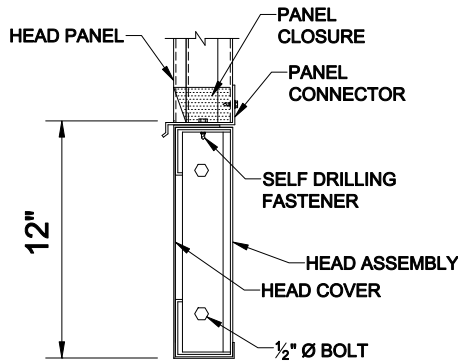
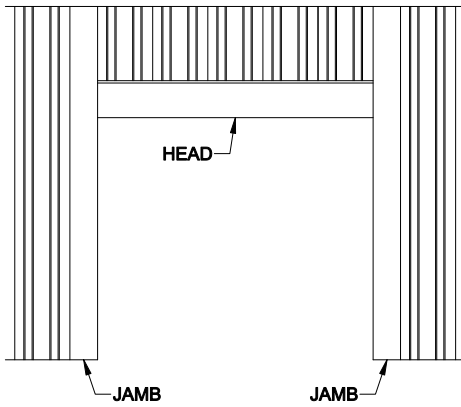
FRAMED OPENINGS

PRODUCT DESCRIPTION

FRAMED OPENINGS

Framed openings for overhead doors shall be constructed from nominal 12 gauge galvanized steel. The 8" wide jambs and 12" tall head shall be provided with a minimum 2½" wide inside surface for field mounting of overhead door track and hardware. Jambs and head shall be provided with nominal 24 gauge covers, embossed, painted wall color.

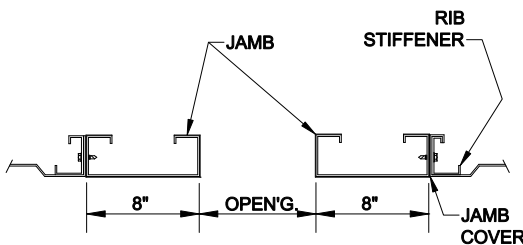
NOTE: Allow a minimum of 1'-0" head room below eave line for overhead type doors and 2'-0" minimum head room for roll up type doors.



SECTION THRU HEAD

Standard Opening Sizes Available

| Widths | Heights |
|-------------|-------------|
| 4'-0" wide | 7'-0" high |
| 6'-8" wide | 8'-0" high |
| 8'-0" wide | 9'-0" high |
| 10'-8" wide | 10'-0" high |
| 12'-0" wide | 11'-0" high |
| 14'-8" wide | 12'-0" high |
| 16'-0" wide | 13'-0" high |



SECTION THRU JAMBS

PRODUCT NAME

Framed Openings

MANUFACTURER

Parkline, Inc.
P.O. Box 65
Winfield, West Virginia 25213
Phone: (304) 586-2113 in WV
(800) 786-4855 outside WV
(304) 586-3842 FAX

web: <http://www.parkline.com>
E-mail: parkline@parkline.com



13122 FO