

# FORMED WALL LINER

## PRODUCT DESCRIPTION FORMED WALL LINER

Interior liner panels shall have a maximum coverage width of 32" and overlap with the adjoining liner panel. The interior surface shall have 1/4" high x 1" wide ribs on 8" centers. The liner shall be continuous length from base to eave except where interrupted by wall accessories. The exterior panel void shall have a 16" wide, 3 1/2" thick unfaced R-13 fiberglass insulation.

Panels shall be rollformed of nominal 26 gauge galvanized steel, prepainted Arctic White.

The liner panel is attached to the exterior panel ribs on 24" centers with a #12 self drilling fastener that is painted to match the liner.

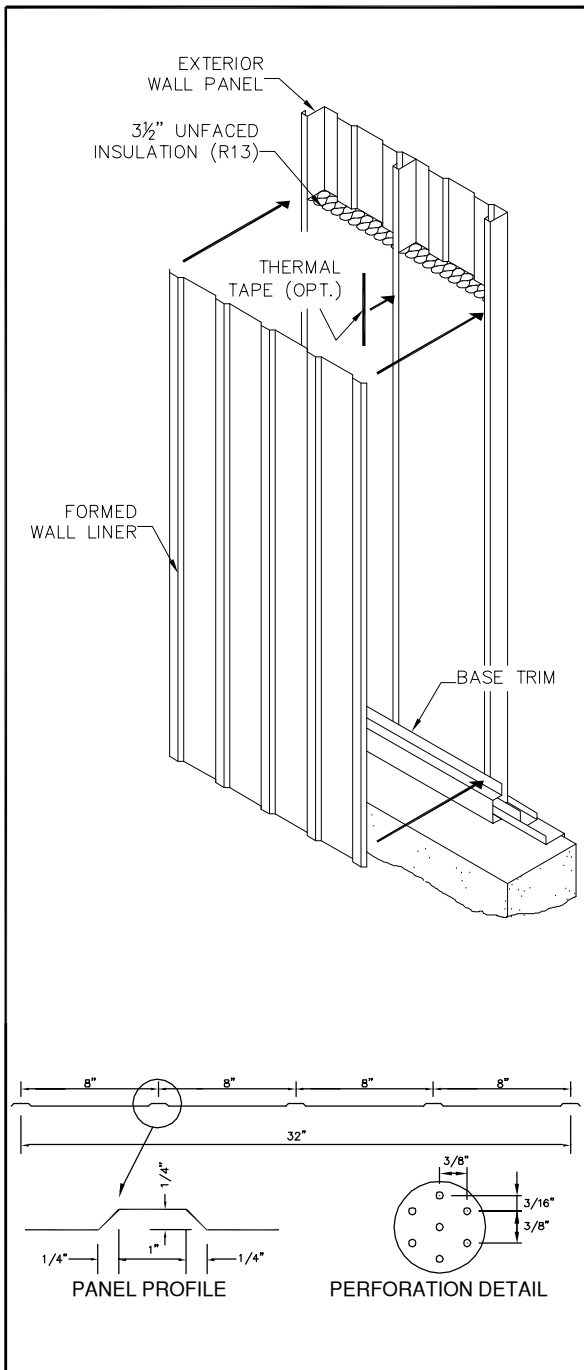
A matching nominal 26 gauge base trim is furnished as a standard. Ceiling trim is only furnished when a Parkline metal ceiling system is being utilized.

Cavity Insulation	R 13
-------------------	------

Calculated system "U" value 0.16 (ASHRAE zone method)

Optional: A one inch wide thermal tape can be applied to the inside of the exterior panel ribs to abate thermal bridging between the joints.

Optional: (Acoustical Wall System A29.)  
A29 Acoustical Wall System shall be accomplished by the system described above including thermal tape, except the liner panel shall have 1/8" diameter perforations spaced on 3/8" staggered centers. The system shall have an NRC rating of 0.90 and STC rating of 29.



## PRODUCT NAME

Formed Wall Liner

## MANUFACTURER

Winfield, West Virginia 25213  
 Phone: (304) 586-2113 in WV  
 (800) 786-4855 outside WV  
 (304) 586-3842 FAX

web: <http://www.parkline.com>  
 E-mail: [parkline @ parkline.com](mailto:parkline@parkline.com)

**P** PARKLINE, INC.

13122 FWL