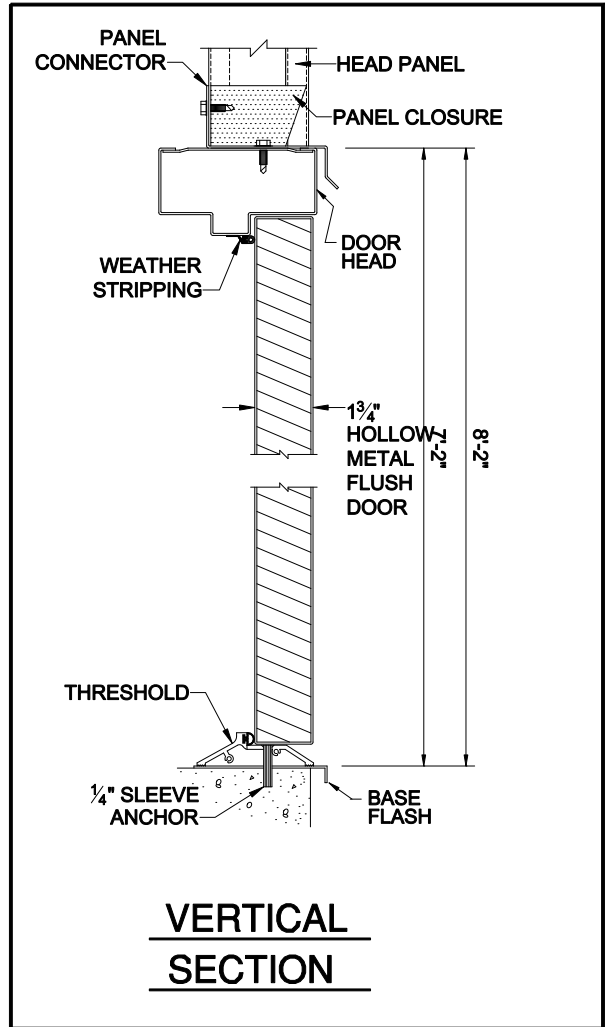
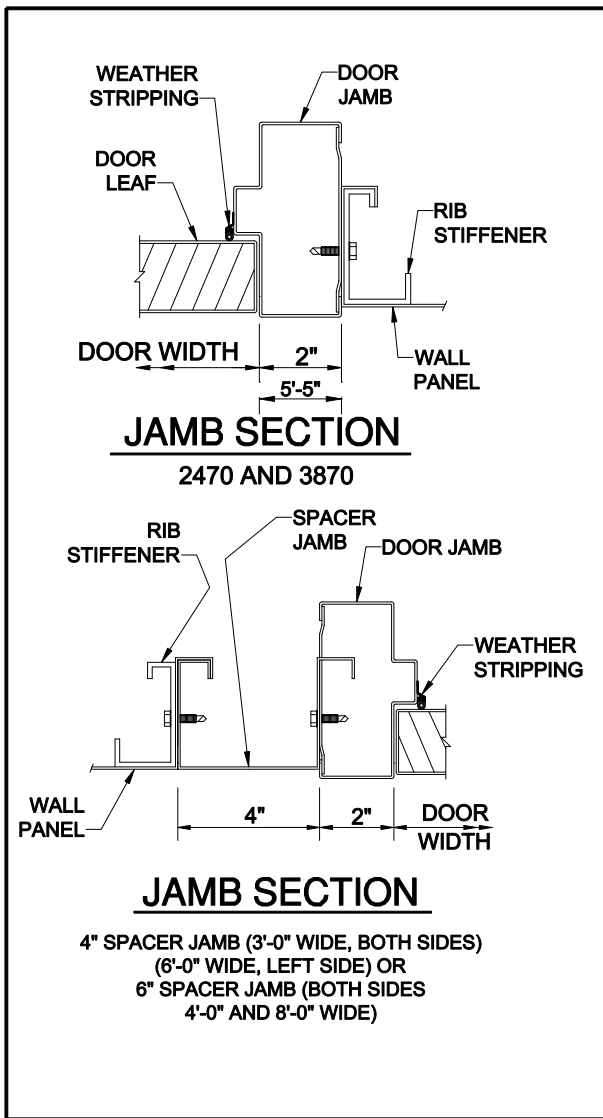


HOLLOW METAL DOOR SECTIONS

PRODUCT DESCRIPTION

DOOR SECTIONS



AVAILABLE STANDARD DOOR SIZES:

Nominal Sizes

Single Swing		Double Swing	
W	H	W	H
a) - 2'-4"	x 7'-0"	g) - 6'-0"	x 7'-0"
b) - 3'-0"	x 7'-0"	h) - 6'-0"	x 8'-0"
c) - 3'-8"	x 7'-0"	i) - 8'-0"	x 7'-0"
d) - 3'-8"	x 8'-0"	j) - 8'-0"	x 8'-0"
e) - 4'-0"	x 7'-0"		
f) - 4'-0"	x 8'-0"		

DOOR SIZE OPTIONS

Removable transoms are available over door.
(See 13122 HMD 5)

PRODUCT NAME

Hollow Metal Doors (Sections)

MANUFACTURER

Parkline, Inc.
P.O. Box 65
Winfield, West Virginia 25213
Phone: (304) 586-2113 in WV
(800) 786-4855 outside WV
(304) 586-3842 FAX

web: <http://www.parkline.com>
E-mail: parkline@parkline.com



13122 HMD 1