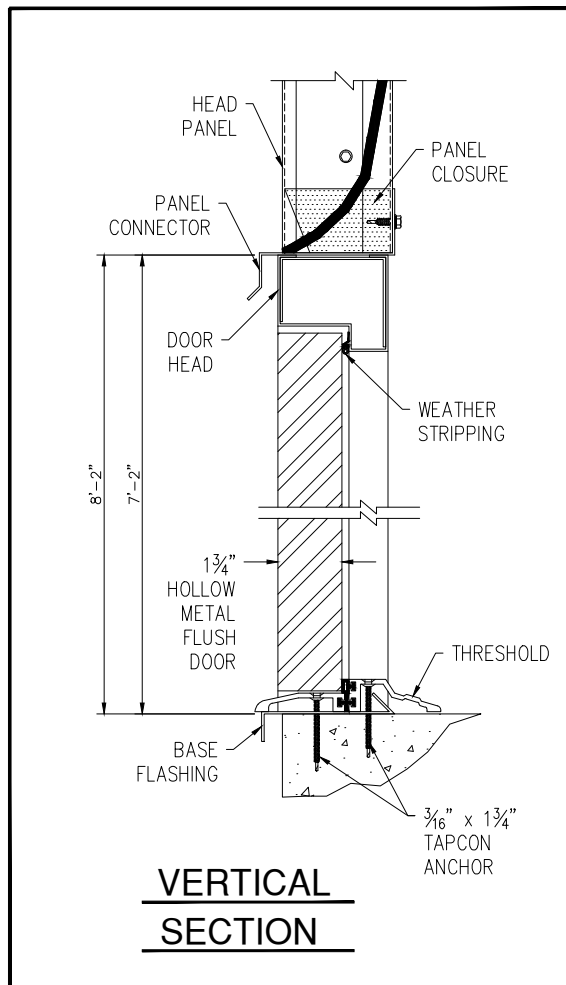
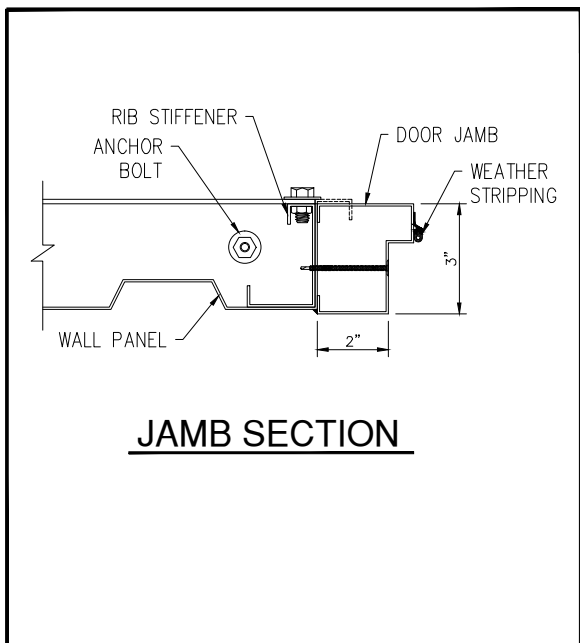


HOLLOW METAL DOOR SECTIONS

PRODUCT DESCRIPTION

DOOR SECTIONS



AVAILABLE STANDARD DOOR SIZES: Nominal Sizes

| Single Swing | | Double Swing | |
|--------------|----------|--------------|----------|
| <u>W</u> | <u>H</u> | <u>W</u> | <u>H</u> |
| a) - 2'-4" | x 7'-0" | g) - 6'-0" | x 7'-0" |
| b) - 3'-0" | x 7'-0" | h) - 6'-0" | x 8'-0" |
| c) - 3'-8" | x 7'-0" | i) - 8'-0" | x 7'-0" |
| d) - 3'-8" | x 8'-0" | j) - 8'-0" | x 8'-0" |
| e) - 4'-0" | x 7'-0" | | |
| f) - 4'-0" | x 8'-0" | | |

PRODUCT NAME

Hollow Metal Doors (Sections)

MANUFACTURER

Parkline, Inc.
 P.O. Box 65
 Winfield, West Virginia 25213
 Phone: (304) 586-2113 in WV
 (800) 786-4855 outside WV
 (304) 586-3842 FAX

E-mail: parkline@parkline.com
 web: <http://www.parkline.com>

DOOR SIZE OPTIONS

Removable transoms are available over door.
 (See 13122 HMD 5)