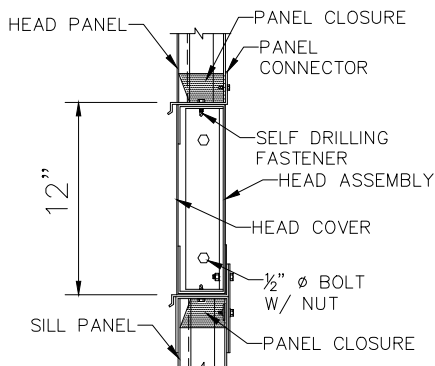
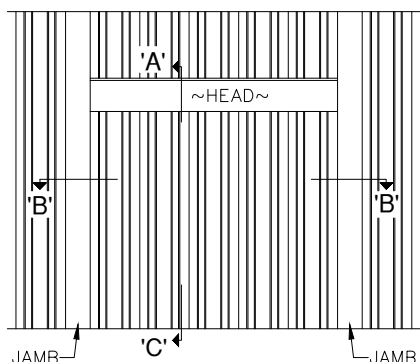


REMOVABLE WALL SECTION

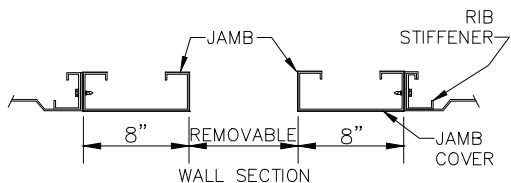
PRODUCT DESCRIPTION

REMOVABLE WALL SECTION

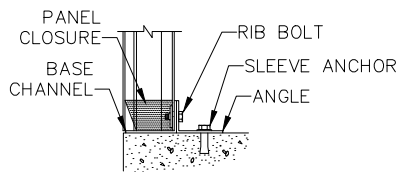
A removable wall section shall consist of a framed opening capable of supporting roof and wall loads when the wall section is removed. The removable section shall consist of the same materials as the permanent wall. Section shall be removable by unbolting from inside the building.



SECTION - 'A'



SECTION 'B'-'B'



SECTION - 'C'

* Note: Refer to framed opening details for size availability.

PRODUCT NAME

Removable Wall Section

MANUFACTURER

Parkline, Inc.

P.O. Box 65

Winfield, West Virginia 25213

Phone: (304) 586-2113 in WV

(800) 786-4855 outside WV

(304) 586-3842 FAX

web: <http://www.parkline.com>

E-mail: parkline@parkline.com



PARKLINE, INC.

13122REM-WALL