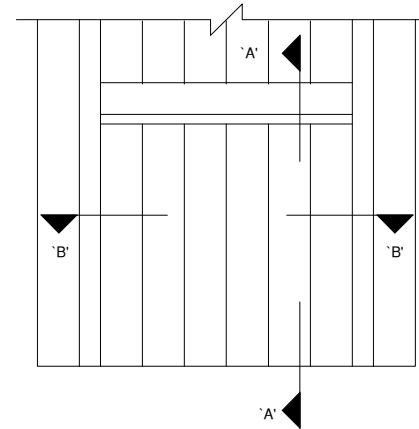
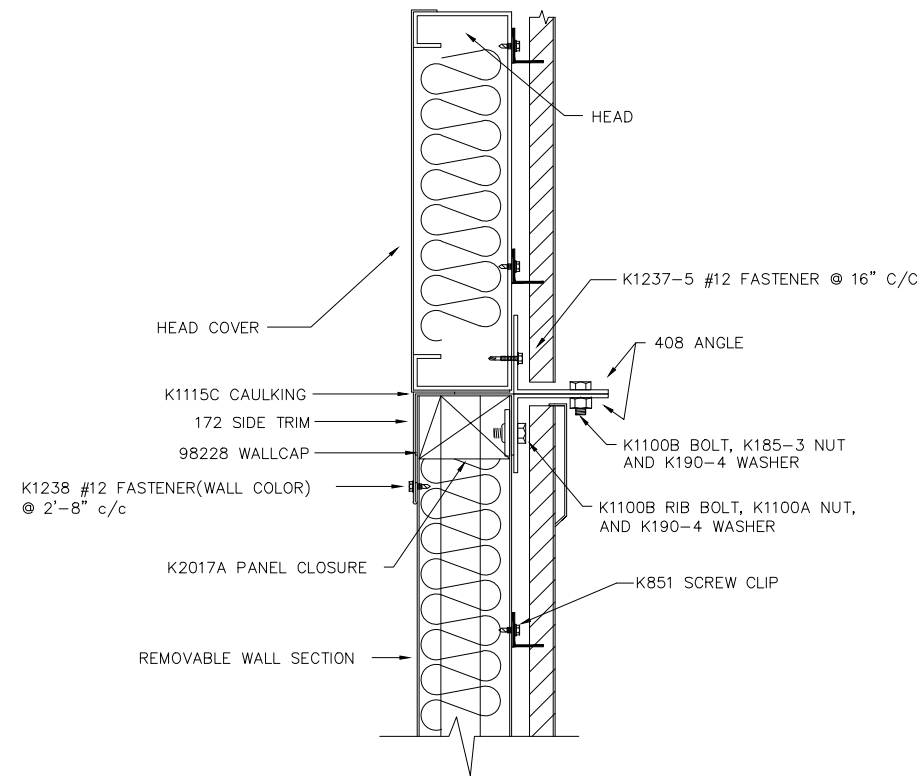
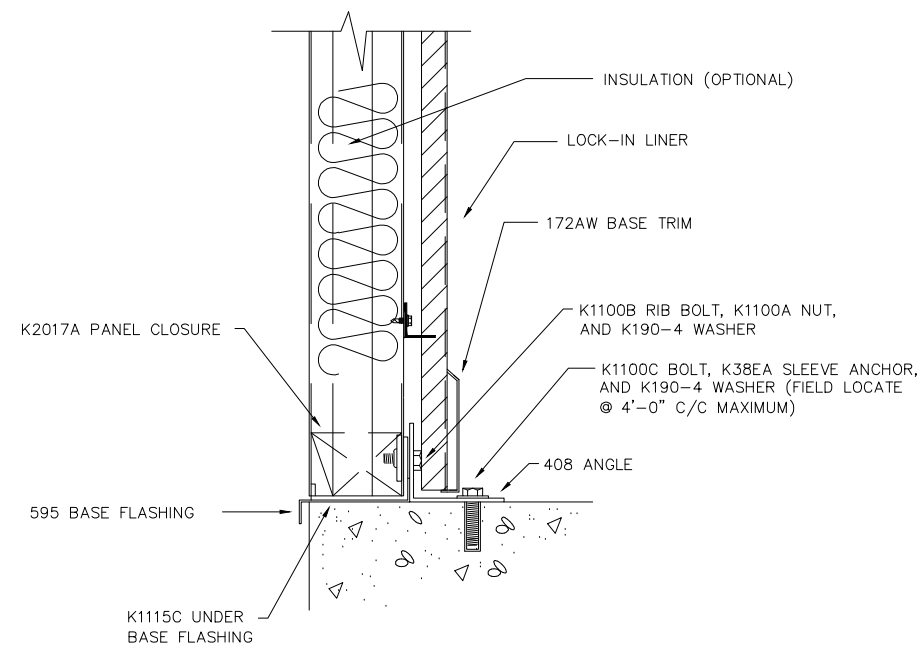


NOTES

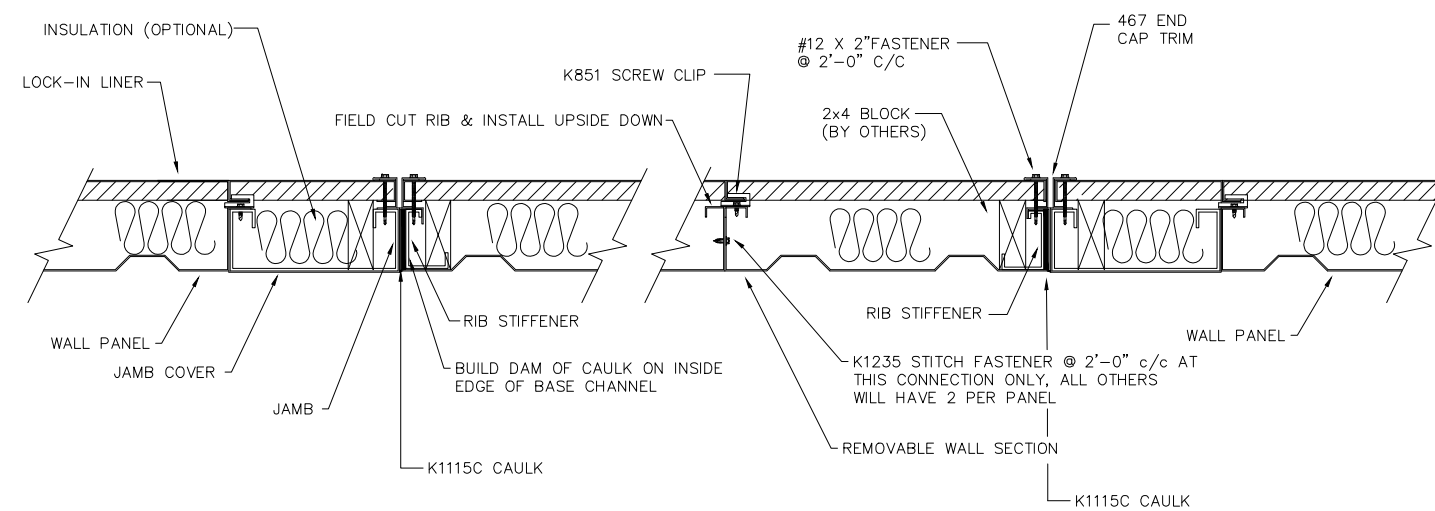
1. INSTALL FRAMED OPENING PER DRAWING FO-1A/1B OR FO-2A/2B, WHICHEVER MAY APPLY.
2. REMOVABLE WALL SECTION MUST BE ASSEMBLED ON GROUND AND LIFTED INTO PLACE. CHECK OVERALL DIMENSIONS AS YOU PROCEED TO ASSURE PROPER FIT.
3. NOTICE THAT THE LAST PANEL TO THE RIGHT MUST BE INSTALLED UPSIDE DOWN AS SHOWN IN SECTION 'B'-'B'
4. ENDS OF BASE CHANNEL IN REMOVABLE SECTION MUST BE PROPERLY CAULKED AS SHOWN IN SECTION 'B'-'B' TO ELIMINATE WATER LEAKAGE.
5. INSTALL LOCK-IN LINER ACCORDING TO DRAWING LIL, WITH THE ADDITION OF THE SPECIAL DETAIL SHOWN BELOW. SOME MODIFICATION OF TRIM MAY BE REQUIRED TO ENSURE PROPER CLEARANCE FOR WALL REMOVAL.
6. CARE MUST BE TAKEN WHEN REMOVING WALL SECTION AS BASE FLASHING IS EASILY DAMAGED.



REMOVABLE WALL ELEVATION
(AS VIEWED FROM EXTERIOR)



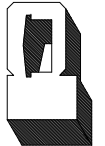
SECTION 'A'-'A'



SECTION 'B'-'B'

REVISIONS	BY
11-15-94	JEH
11-07-96	KAG
11-26-96	KAG
01-06-05	WBD
07-26-11	KRK

PARKLINE, INC.
RT. 62, ELEANOR INDUSTRIAL PARK
ELEANOR, WV 25070
EMAIL: PARKLINE@PARKLINE.COM
PHONE: 800-786-4855
FAX: 304-586-3842
ENGINEER: TOM HARDING
THARDING@PARKLINE.COM



JOB DESCRIPTION
**REMOVABLE WALL
SECTION W/ LOCK-IN
LINER**

SHEET TITLE
DETAILS

DATE	10-18-94
DRAWN BY	JEH
SCALE	NTS
ORDER NO.	
REVISION	5

RWS-L