

# CEILING

WITH R30 INSULATION

## PRODUCT DESCRIPTION

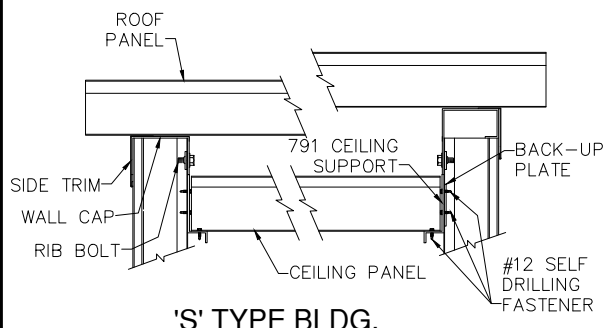
### CEILING with R30 Insulation

The metal ceiling system shall consist of 3" deep, 16" wide interlocking panels of nominal 24 gauge embossed galvanized steel, factory painted Arctic White. The ceiling system shall be supported at its perimeter by concealed angles and self drilling fasteners. The ceiling system shall be furnished complete with all necessary connectors and fasteners.

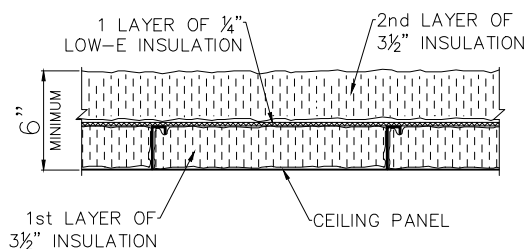
Metal ceiling insulated with (2) layers of 3½" thick, R13 unfaced fiberglass insulation and (1) layer of ¼" 'Low-E' R7 insulation.

Cavity Insulation	R13
Continuous Insulation	R7
Continuous Insulation	R13

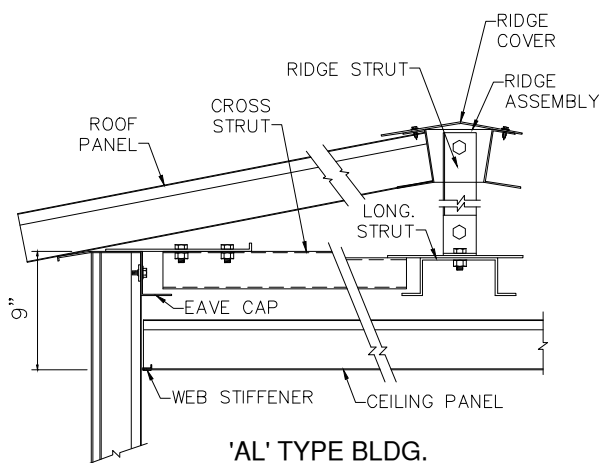
Calculated system "U" value 0.04 (ASHRAE zone method)



'S' TYPE BLDG.



R30 INSULATION DETAIL



'AL' TYPE BLDG.

## PRODUCT NAME

Ceiling with R30 Insulation

## MANUFACTURER

Parkline, Inc.  
 P.O. Box 65  
 Winfield, West Virginia 25213  
 Phone: (304) 586-2113 in WV  
 (800) 786-4855 outside WV  
 (304) 586-3842 FAX  
 web: <http://www.parkline.com>  
 e-mail: [parkline@parkline.com](mailto:parkline@parkline.com)

 **PARKLINE, INC.**  
**13122CEL30**