

**STANDARD CEILING FOR  
TYPE 'S' BUILDING  
WITH R38 INSULATION**

**PRODUCT DESCRIPTION**

The metal ceiling system shall consist of 3" deep, 16" wide interlocking panels of nominal 24 gauge embossed galvanized steel, factory painted Arctic White. (ASTM A653 GRADE 40).

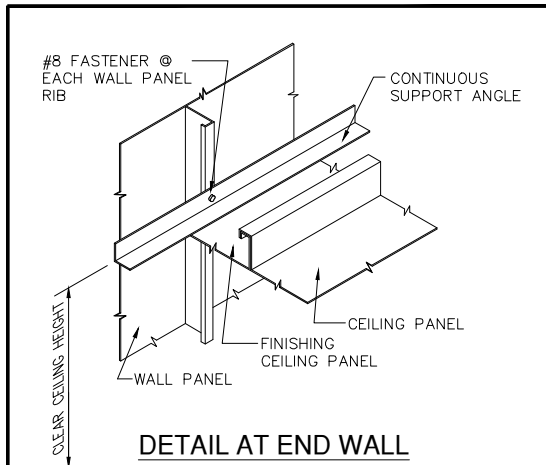
The ceiling system shall be supported at the side walls with a nominal 14 gauge support attached with #12 self drilling fasteners. The ceiling system shall be furnished complete with all necessary connectors and fasteners.

Ceiling is insulated with (3) layers of 3½" R13 unfaced fiberglass insulation and (1) layer of ¼" 'Low-E' R7 insulation.

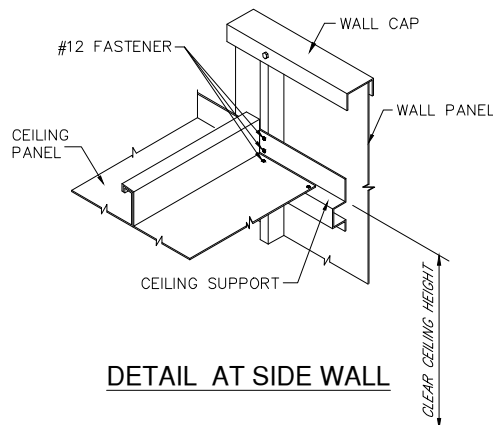
**NOTE:** Clear ceiling height is eave height - 8" (minimum). Refer to you building's specific elevation drawings for required clear ceiling height.

**NOTES:**

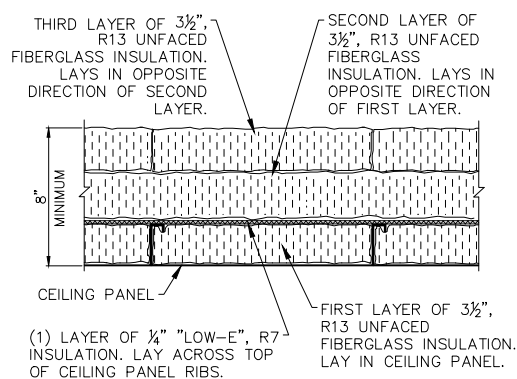
1. Equipment supports are required when additional load must be supported from the ceiling. (Support can also be used without a ceiling system.) The most common type of loads to be supported are electrical/ lights and cable tray systems.
2. Equipment supports vary in size. Gauge and locations depending on the load to be supported.
3. Refer to your job specific roof panel layout or cable tray layout for quantity and locations.
4. All connection items and hanging hardware are not provided by Parkline.



**DETAIL AT END WALL**



**DETAIL AT SIDE WALL**



**R38 INSULATION DETAIL**