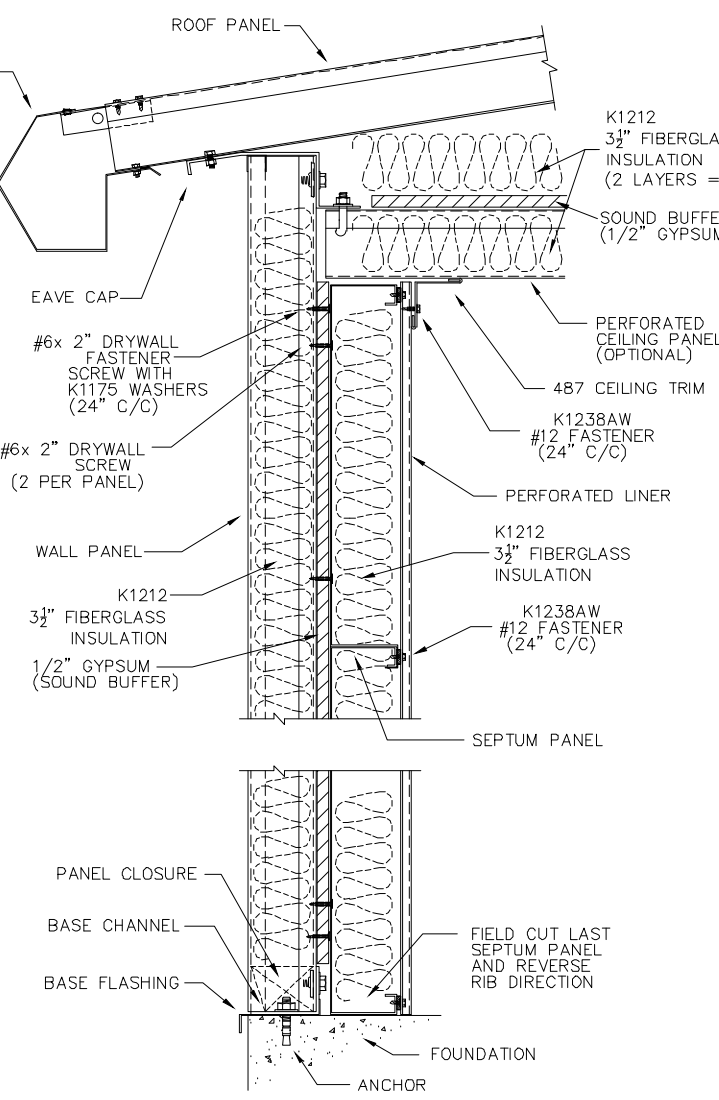
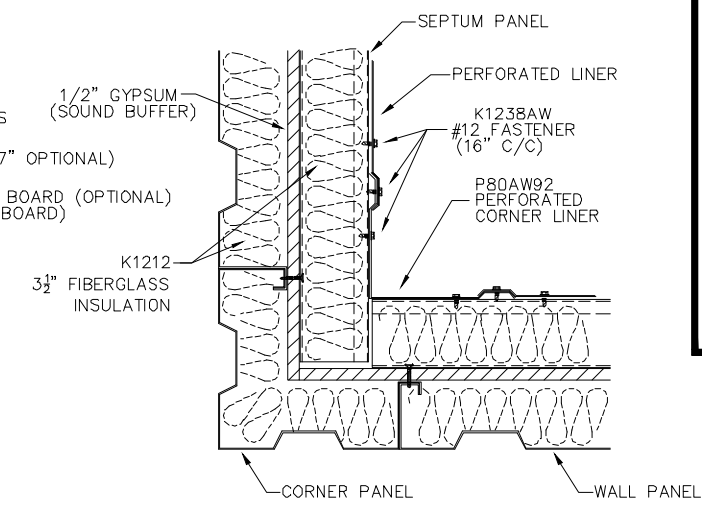


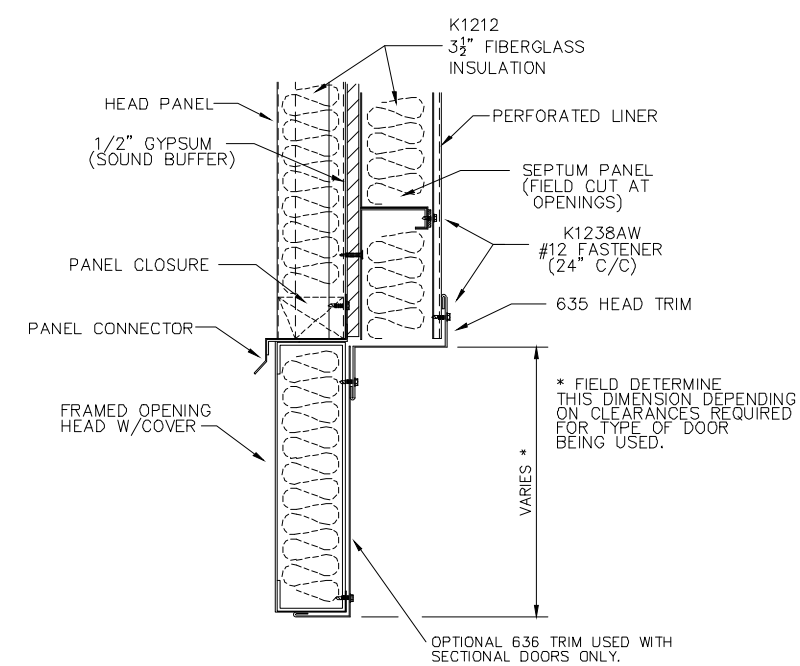
- INSTALLATION:**
1. INSTALL PERFORATED CEILING IF USED PRIOR TO STARTING WALL LINER. SEE DRAWING CEIL-A-1 (STANDARD HEIGHT) SEE DRAWING CEIL-A-2 (DROPPED)
 2. FASTEN 1/2" GYPSUM BOARD (SOUND BUFFER) TO WALL PANEL RIBS USING 2" DRYWALL SCREWS WITH K1175 WASHERS
 3. INSTALL SEPTUM PANELS AGAINST SOUND BUFFER POSITIONING TOP PANEL BELOW CEILING WITH SUFFICIENT ROOM TO FASTEN LINER TO SEPTUM RIB. FIELD CUT PANELS AROUND ALL OPENINGS. FIELD CUT BOTTOM PANEL AND REVERSE RIB DIRECTION UPWARD ALLOWING ROOM TO FASTEN LINER TO RIB.
 4. FILL SEPTUM PANEL CAVITY WITH FIBERGLASS INSULATION. (K1212, 3 1/2"x 16"x 8" PCS.)
 5. INSTALL K1162R CLOSURE TAPE TO EACH RIB OF SEPTUM PANELS.
 6. FASTEN PERFORATED LINER TO SEPTUM RIB USING #12 FASTENERS ON 24" CENTERS. BEGIN INSTALLING LINER IN CORNERS, FIELD CUTTING LINER AT ALL OPENINGS.
 7. INSTALL ALL LINER TRIM AROUND WALL OPENINGS USING #12 FASTENERS. INSTALL CEILING TRIM.



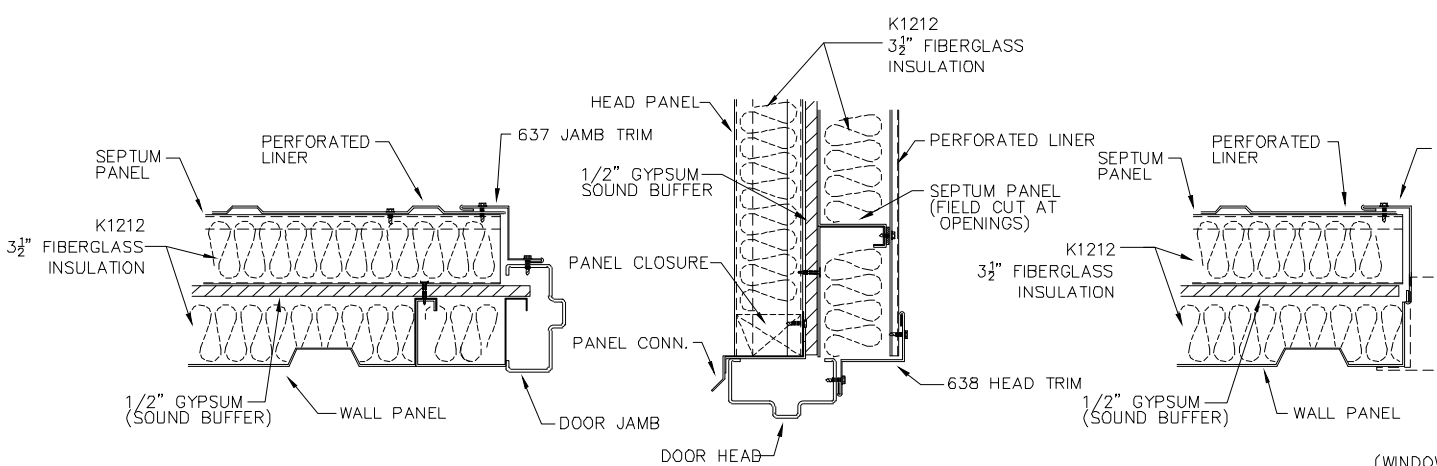
TYPICAL CROSS SECTION
(SIDEWALL SHOWN)
NOTE: SHOWN WITH OPTIONAL ACOUSTICAL CEILING SYSTEM.



CORNER DETAIL



FRAMED OPENING HEAD DETAIL



JAMB DETAIL

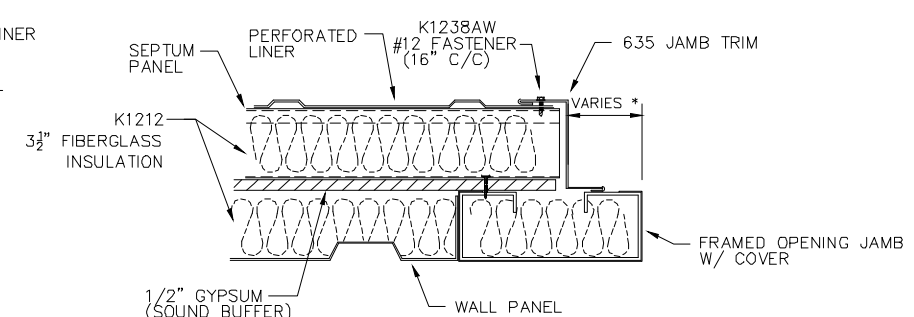
HEAD DETAIL

JAMB DETAIL

HEAD DETAIL

DOOR SECTION

WALL OPENING SECTION



FRAMED OPENING JAMB DETAIL

NOTE: THIS IS A NON-TESTED SYSTEM

REVISIONS	BY
10-07-03	RAP
1-17-05	WBD
01-25-05	DLR

PARKLINE, INC.
P O Box 65 Winfield, WV 25213
phone: (304) 566-2113

A48
ACOUSTICAL WALL SYSTEM FOR TYPE 'AL' BUILDINGS
JOB DESCRIPTION
SHEET TITLE
INSTALLATION

DATE 5-16-03
DRAWN BY RAP
SCALE NTS
ORDER NO.
REVISION **3**
DWG. NO. **A48-AL-NT**