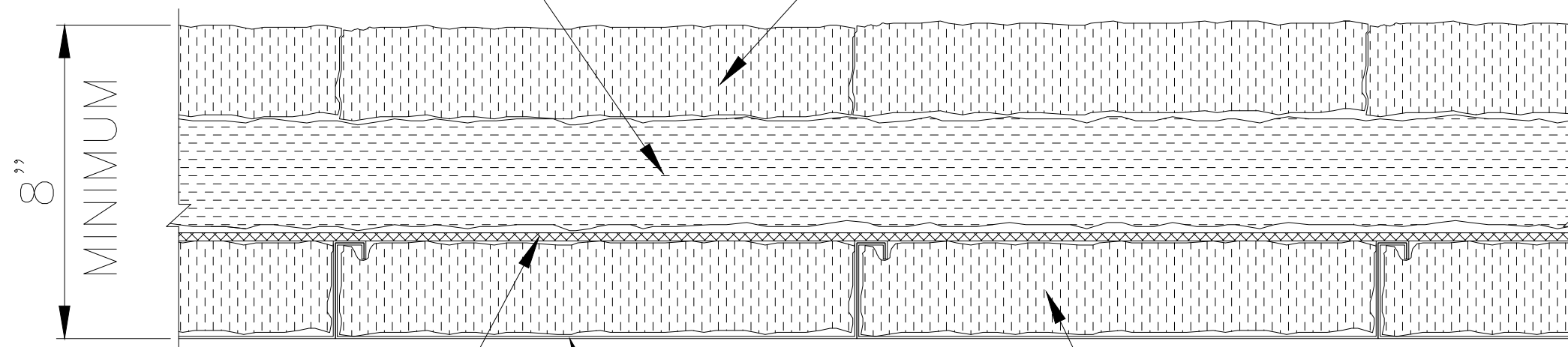


SECOND LAYER OF K1313, 3½", R13 UNFACED FIBERGLASS INSULATION. LAYS IN OPPOSITE DIRECTION OF FIRST LAYER.

THIRD LAYER OF K1313, 3½", R13 UNFACED FIBERGLASS INSULATION. LAYS IN OPPOSITE DIRECTION OF SECOND LAYER.



(1) LAYER OF ¼" "LOW-E", R7 INSULATION. LAY ACROSS TOP OF CEILING PANEL RIBS.

CEILING PANEL

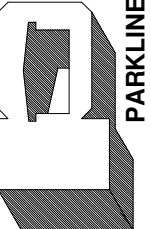
FIRST LAYER OF K1313, 3½", R13 UN-FACED FIBERGLASS INSULATION. LAY IN CEILING PANEL.

R38 INSULATION DETAIL

NOTES:

1. USE THIS DRAWING IN CONJUNCTION WITH DRAWING SERIES #CEIL-AL-2, 3 OR 4 FOR TYPE 'AL' BUILDINGS AND DRAWING #CEIL-S14 OR #CEIL-S14-PE2 FOR TYPE 'S' BUILDINGS.
2. CEILING **MUST BE** DROPPED A MINIMUM OF 8" FOR TYPE 'S' BUILDINGS, 11" FOR TYPE 'AL' BUILDINGS.
3. REFER TO YOUR JOB SPECIFIC ELEVATION DRAWING FOR REQUIRED CEILING HEIGHT.

REVISIONS	BY
11-15-10	TLC
05-17-11	TLC



PARKLINE, INC
P O Box 65 Winfield, WV 25213
phone: (304) 586-2113

JOB DESCRIPTION	R38 CEILING INSULATION SYSTEM FOR TYPE 'S' AND 'AL' BUILDINGS
SHEET TITLE	DETAILS

DATE	04-20-10
DRAWN BY	RAP
SCALE	N.T.S.
ORDER NO.	
REVISION	2

CEIL-R38