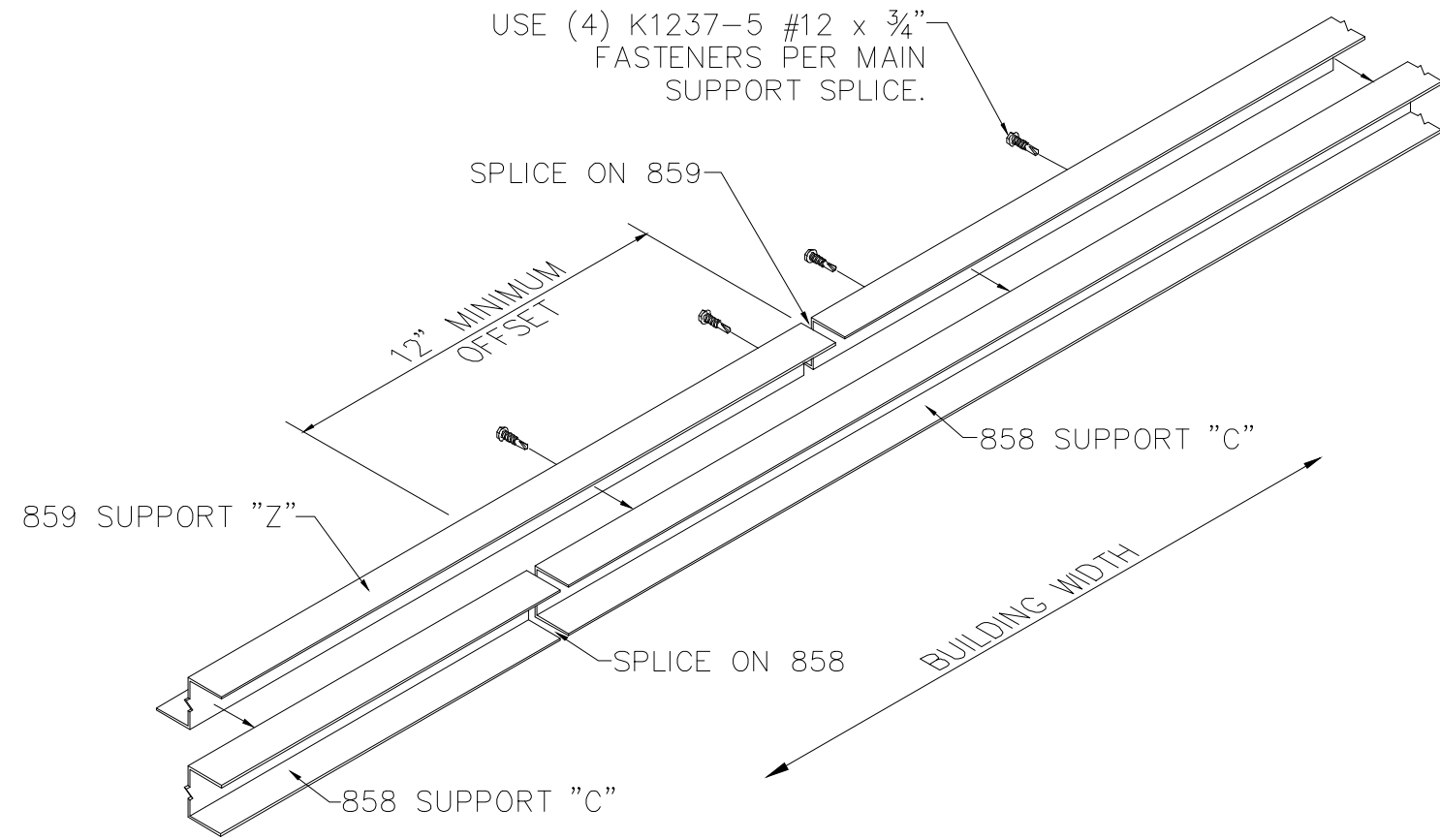
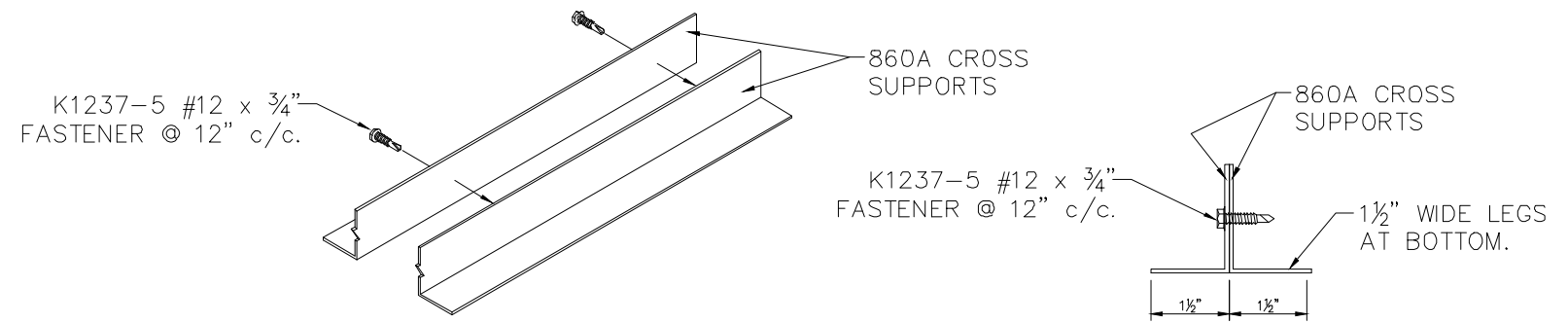


NOTES:

- BEFORE BEGINNING INSTALLATION, TAKE A FEW MOMENTS TO REVIEW ALL NOTES, STEPS, AND DETAILS PERTAINING TO THE INSTALLATION OF THE THERMA-ROOF SYSTEM. IF YOU HAVE ANY QUESTIONS, CONTACT PARKLINE BEFORE PROCEEDING.
- THE THERMA-ROOF SYSTEM **MUST** BE INSTALLED AS A PART OF THE ROOF ERECTION SEQUENCE. AS SOON AS THE FIRST RIDGE SECTION IS INSTALLED, THE BEGINNING EAVE AND RIDGE MAIN SUPPORT ASSEMBLIES FOR THE THERMA-ROOF SYSTEM CAN BE FASTENED INTO PLACE.
- THE THERMA-ROOF INSULATION SYSTEM IS MADE UP OF TWO LAYERS OF 1½" THICK INSULATION BOARD. EACH BOARD IS 48" WIDE x 96" LONG. PART NUMBER KR1508 HAS A WHITE FINISHED SIDE WHICH WILL ALWAYS BE THE FIRST LAYER WITH WHITE SIDE DOWN. PART NUMBER KL1508 HAS A FOIL FACE ON BOTH SIDES AND WILL ALWAYS BE THE TOP LAYER.
- WHEN INSTALLING THE TOP LAYER OF INSULATION, MAKE SURE THAT INSULATION SPLICES DO NOT LINE UP. OFFSET SPLICES BOTH IN WIDTH AND ALSO LENGTH. THE OFFSETTING OF SPLICES HELP MAINTAIN THE SYSTEM'S INSULATION VALUES. PARKLINE RECOMMENDS CUTTING 6" OFF THE SIDE AND 6" OFF THE END OF THE FIRST TOP LAYER BOARD INSULATION.
- ONLY THE LOWER INSULATION BOARD USES THE MAIN AND CROSS SUPPORT ASSEMBLIES. THE UPPER LAYER JUST LAYS ON TOP OF THE FIRST LAYER. MAIN SUPPORT ASSEMBLIES RUN BOTH THE WIDTH AND LENGTH OF THE BUILDING.
- MAIN SUPPORT ASSEMBLIES ARE MADE UP OF PART NUMBERS 858A/B AND 859A/B. THESE PARTS ARE PROVIDED IN 8'-0" AND 12'-0" LONG SECTIONS. IF BUILDING IS OVER 16'-0" WIDE OR CONTAINS ROOF ACCESSORIES, CROSS SUPPORT ASSEMBLIES WILL BE REQUIRED. CROSS SUPPORT ASSEMBLIES ARE MADE UP OF (2) PART NUMBERS 860A AND ARE 48" LONG. THESE PARTS SHOULD BE PRE-ASSEMBLED ON THE GROUND BEFORE STARTING. SEE **CROSS SUPPORT DETAILS** TO THE RIGHT **MAIN SUPPORT DETAILS** BELOW, AND **STEP 2** ON DRAWING **TR-AL-2**.
- IF THE BUILDING WIDTH REQUIRES THE MAIN SUPPORT ASSEMBLIES TO BE SPLICED (WIDER THAN 24'-0"), SPLICES SHOULD BE OFFSET FOR STRENGTH. SEE **DETAIL AT MAIN SUPPORT SPLICE** TO THE RIGHT.
- TO ALIGN INSULATION BOARD SIDE SPLICES WITH THE ROOF PANELS ABOVE, CUT THE FIRST PIECE OF BOTTOM LAYER INSULATION 37" WIDE. THIS WILL ALLOW THE INSTALLATION OF ANY ROOF OPENINGS IF REQUIRED. SEE DRAWING **TR-AL-4** FOR ADDITIONAL DETAILS.
- MAIN SUPPORT ASSEMBLIES RUNNING THE LENGTH OF THE BUILDING WILL CORRESPOND TO THE WINDBRACING BAY LENGTH. EXAMPLE: 8' BAYS REQUIRE AN 8' MAIN SUPPORT ASSEMBLY AND A 12' BAY REQUIRES A 12' MAIN SUPPORT ASSEMBLY.
- STARTING AND FINISHING WINDBRACING BAYS, AND NON-STANDARD LENGTH WINDBRACING BAYS WILL REQUIRE THE FIELD CUTTING OF MAIN SUPPORT ASSEMBLIES.

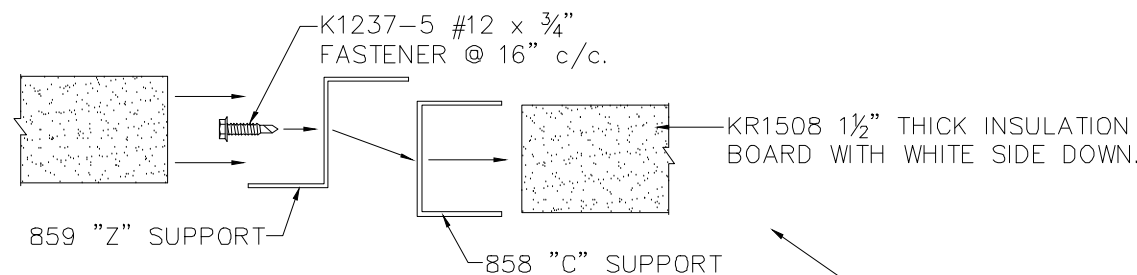


DETAIL AT MAIN SUPPORT SPLICE
FOR BUILDINGS OVER 24'-0" WIDE ONLY!

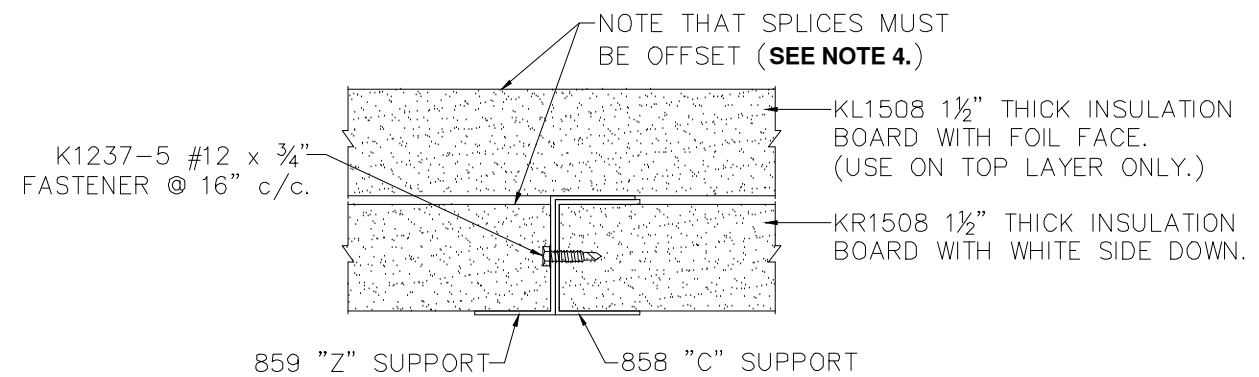


DETAIL AT CROSS SUPPORTS
FOR BUILDINGS OVER 16'-0" WIDE OR WITH ROOF ACCESSORIES!

CROSS SUPPORT SECTION



EXPLODED VIEW OF MAIN SUPPORT



MAIN SUPPORT SECTION

MAIN SUPPORT DETAILS

REVISIONS	BY
11-29-07	RAP

PARKLINE, INC.
P. O. Box 65 Winfield, WV 25213
phone: (304) 586-2113

**THERMA-ROOF SYSTEM
INSTALLATION DETAILS
FOR TYPE 'AL' BUILDINGS**

JOB DESCRIPTION

SHEET TITLE

NOTES AND DETAILS

DATE	03-15-06
DRAWN BY	CEM
SCALE	NTS
ORDER NO.	
REVISION	1

DWG. NO.
TR-AL-1