

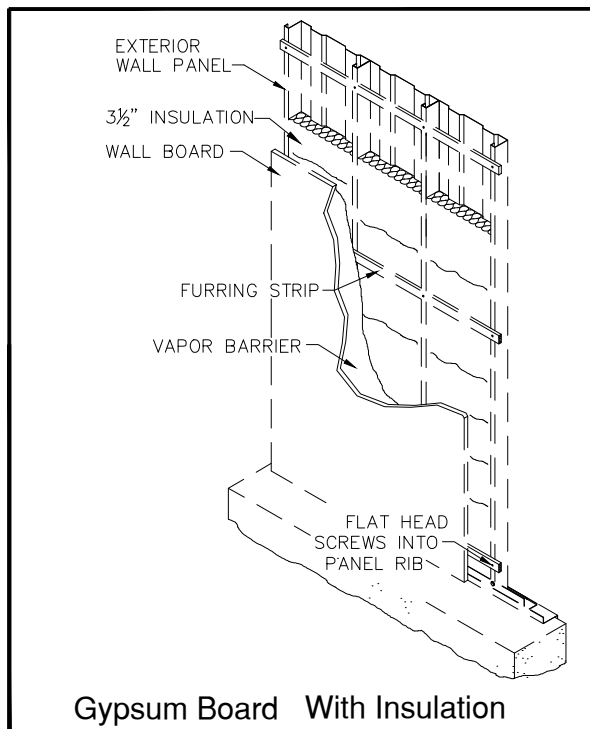
WALL INSULATION

PRODUCT DESCRIPTION

ROLL-IN II INSULATION

The interior of the building shall be insulated with 16" wide, 3 1/2" thick R-13 unfaced fiberglass insulation with separate white metalized polypropylene scrimkraft facing stretched across the interlocking panel ribs and held in place with a white PVC 1 1/2" wide batten strip attached with #12 self drilling fasteners.

| | |
|---|------|
| Cavity Insulation | R 13 |
| Calculated system "U" value 0.19 (ASHRAE zone method) | |



GYPSUM BOARD WITH INSULATION

The wall system shall include 16" wide, 3 1/2" thick R-13 unfaced fiberglass insulation, vapor barrier (optional), furring strips and 1/2" thick gypsum board.

| | |
|---|------|
| Cavity Insulation | R 13 |
| Calculated system "U" value 0.16 (ASHRAE zone method) | |

Many different interior finishes can be easily applied to the Parkline wall systems to achieve the desired thermal or fire ratings.

PRODUCT NAME

Wall Insulation

MANUFACTURER

Winfield, West Virginia 25213

Phone: (304) 586-2113 in WV

(800) 786-4855 outside WV

(304) 586-3842 FAX

web: <http://www.parkline.com>

E-mail: parkline@parkline.com

PARKLINE, INC.
13122WI