

Lock-In Wall Liner Plus

LOCK-IN PLUS WALL LINER

PRODUCT DESCRIPTION

LOCK-IN PLUS WALL LINER

The interior of the building shall be finished with a factory assembled insulated metal liner panel having no exposed fasteners except at the matching base, ceiling and accessory trim.

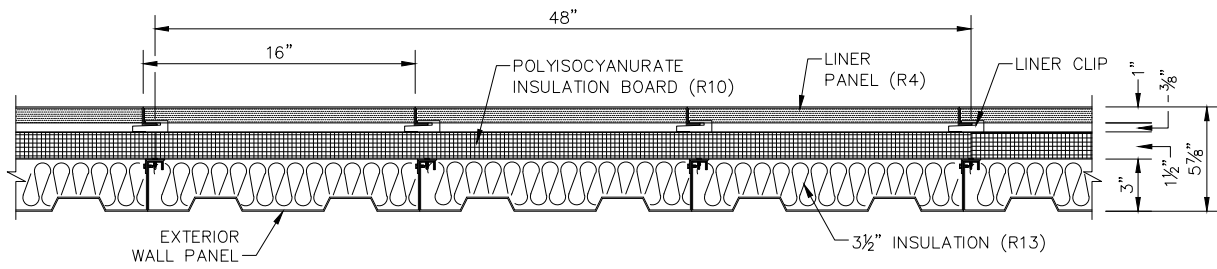
The wall liner system shall have a concealed insulating board of 1 1/2" thick polyisocyanurate foam impaled on rib clips.

Liner panels shall be 16" wide, nominal 26 gauge, embossed, galvanized steel, prepainted Arctic White. Insulation shall be non-combustible, nominal 1" thick, 2# minimum density fiberglass laminated to the liner panel.

The void between the exterior wall panel and the lock-in liner panel shall be insulated with 16" wide, 3 1/2" thick R13 un-faced fiberglass insulation.

Cavity Insulation	R4
Continuous Insulation	R10
Cavity Insulation	R13

Calculated system "U" value 0.13 (ASHRAE zone method)



LOCK-IN LINER PLUS