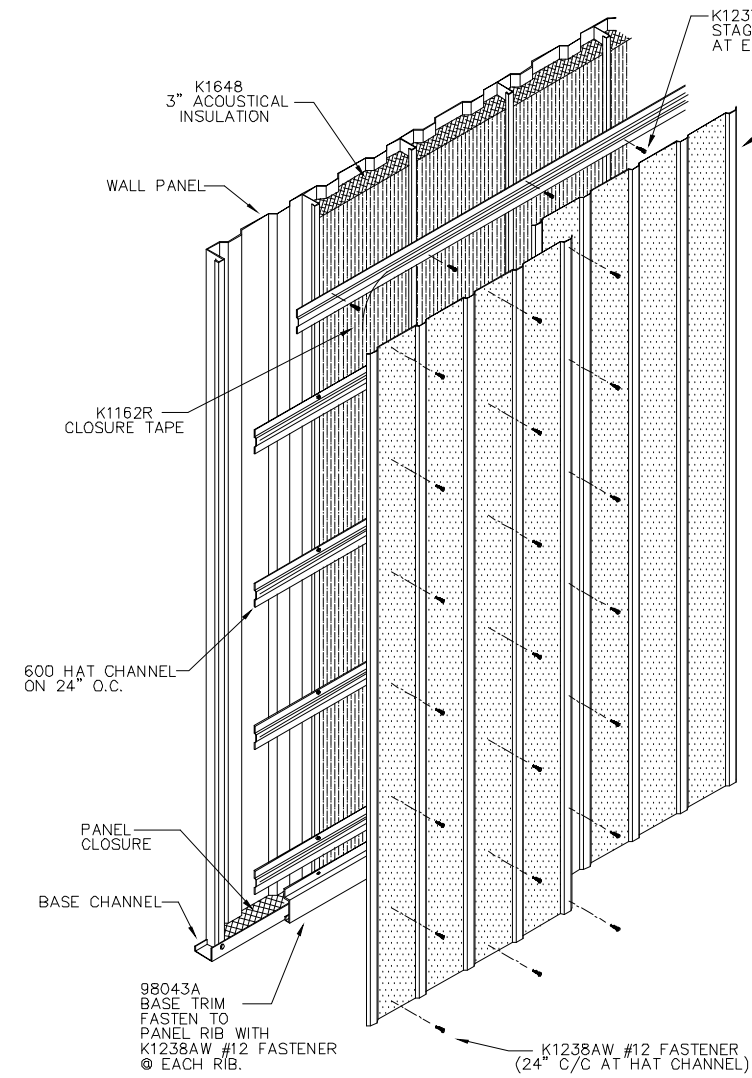
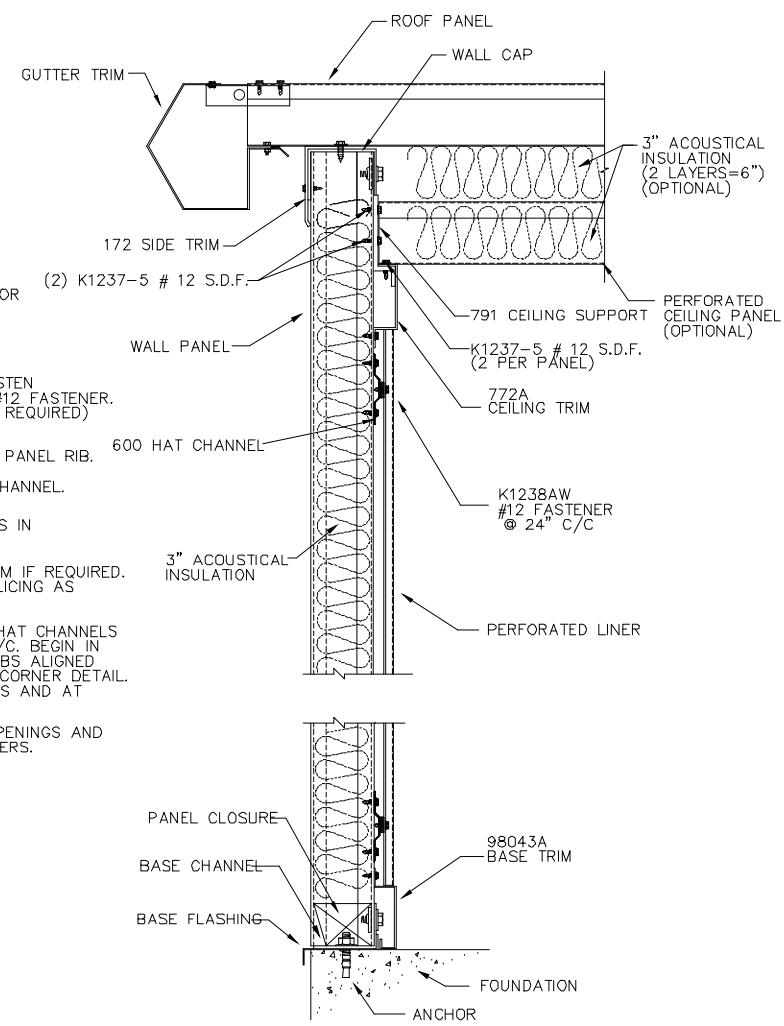


WARNING!!
DO NOT ATTACH WALL LINER THROUGH RAISED RIBS! ATTACH TO SIDE OF RAISED RIBS ONLY!

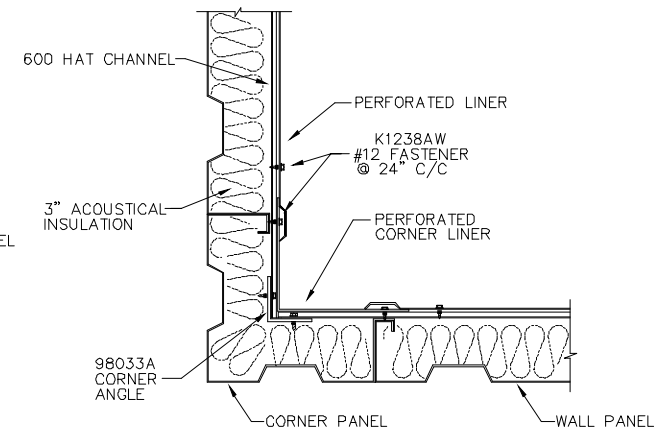


- INSTALLATION:**
1. INSTALL PERFORATED CEILING IF USED PRIOR TO STARTING WALL LINER. (SEE DRAWING CEIL-S)
 2. INSTALL ACOUSTICAL WALL INSULATION.
 3. INSTALL HAT CHANNELS ON 24" O.C. FASTEN IN STAGGERED PATTERN USING K1237-5 #12 FASTENER. (FIELD CUT OR SPLICE HAT CHANNELS AS REQUIRED)
 4. INSTALL BASE AND CEILING TRIM. FASTEN USING K1238AW #12 FASTENERS AT EACH PANEL RIB.
 5. INSTALL K1162R CLOSURE TAPE TO HAT CHANNEL.
 6. FASTEN CORNER LINERS TO HAT CHANNELS IN EACH CORNER.
 7. INSTALL FRAMED OPENING JAMB/HEAD TRIM IF REQUIRED. ATTACH AS SHOWN FIELD CUTTING OR SPLICING AS REQUIRED.
 8. BEGIN INSTALLING PERFORATED LINER TO HAT CHANNELS USING K1238AW #12 FASTENERS @ 24" C/C. BEGIN IN CORNERS MAKING SURE TO KEEP LINER RIBS ALIGNED WITH WALL PANEL RIBS. SEE WARNING IN CORNER DETAIL. FIELD CUT LINER AS REQUIRED IN CORNERS AND AT OPENINGS.
 9. INSTALL ALL LINER TRIM AROUND WALL OPENINGS AND DOOR JAMBS USING K1238AW #12 FASTENERS.

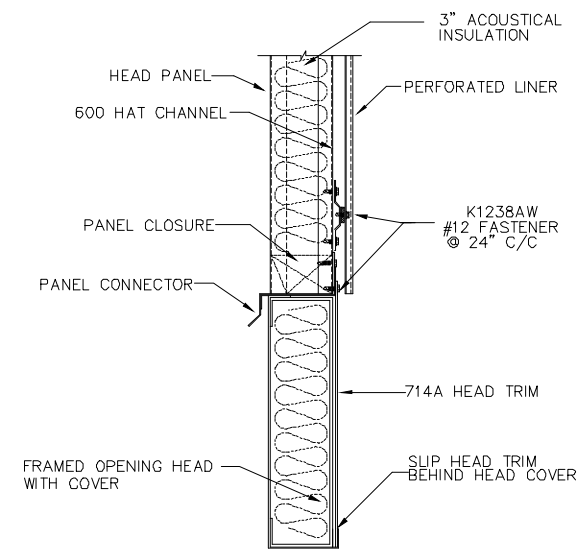
NOTE:
ALSO REFER TO STANDARD FORMED LINER INSTALLATION DETAILS ON DRAWINGS FORM-1 AND FORM -2



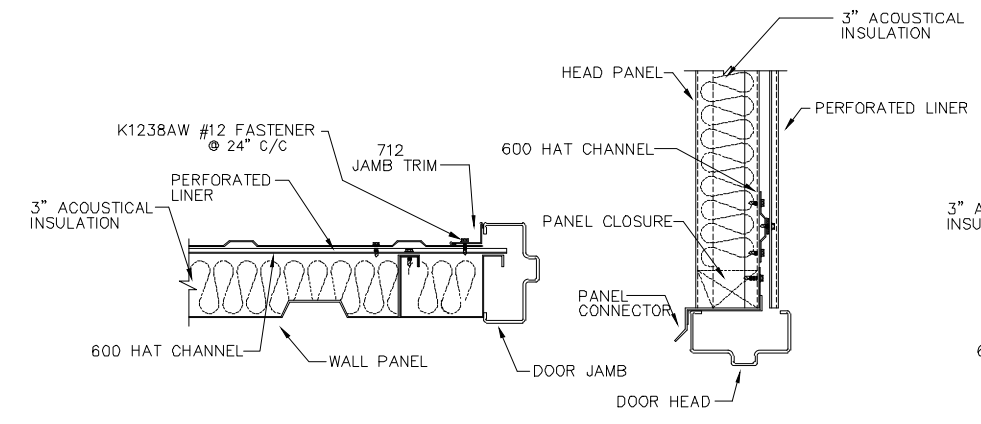
TYPICAL CROSS SECTION
(LOW SIDEWALL SHOWN)
SHOWN WITH OPTIONAL CEILING SYSTEM



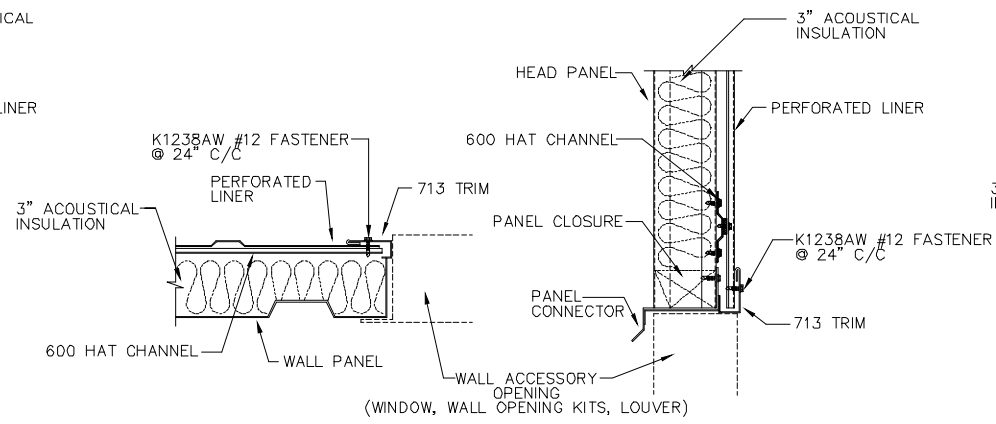
CORNER DETAIL



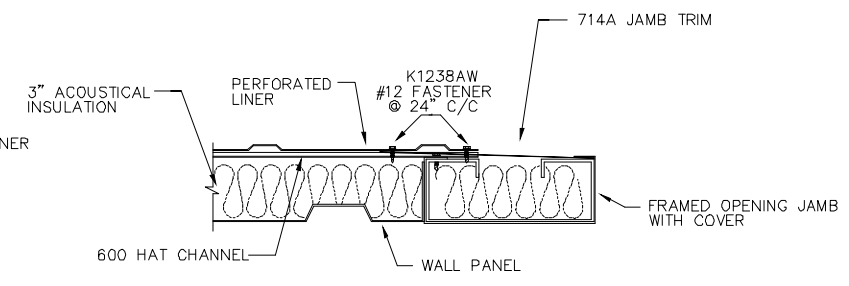
FRAMED OPENING HEAD DETAIL



JAMB DETAIL HEAD DETAIL
DOOR SECTION



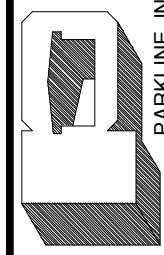
JAMB DETAIL HEAD DETAIL
WALL OPENING SECTION



FRAMED OPENING JAMB DETAIL

NOTE: THIS IS A NON-TESTED SYSTEM

REVISIONS	BY
01-24-05	DLR



PARKLINE, INC.
P O Box 65 Winfield, WV 25213
phone: (304) 586-2113

JOB DESCRIPTION	A30 ACOUSTICAL WALL SYSTEM WITH HAT CHANNELS FOR TYPE 'S' BUILDINGS	
	SHEET TITLE	
	DETAILS	
	DATE	05-27-03
	DRAWN BY	RAP
SCALE	N.T.S	
ORDER NO.		
REVISION	1	
DWG. NO.	A30-S-NT	