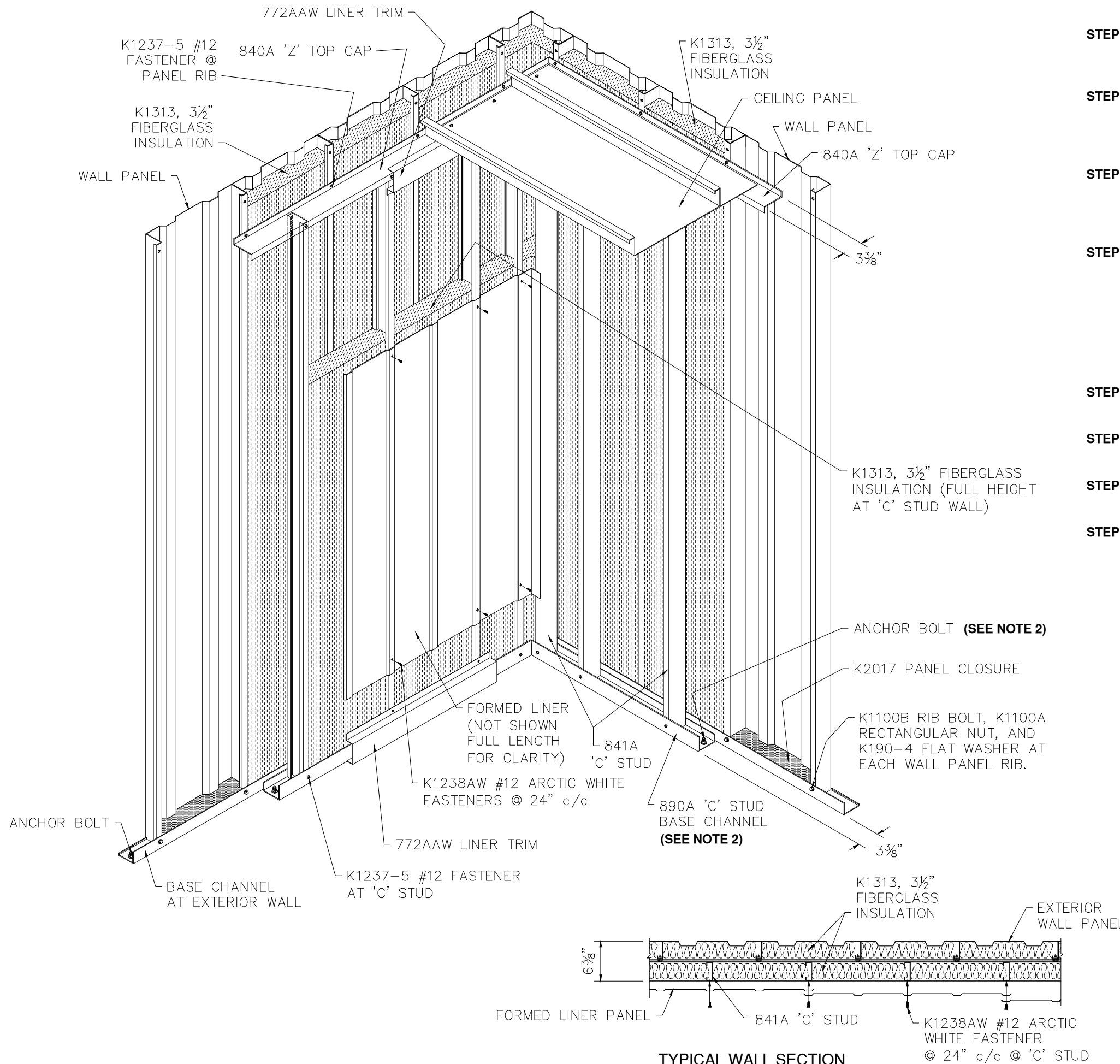


## INSTALLATION OF 'C' STUDWALL

- STEP 1.** INSULATE ALL EXTERIOR WALL PANELS, SPACER JAMBS, FRAMEOPENING JAMBS AND HEADS WITH K1313 FIBERGLASS INSULATION.
- STEP 2.** INSTALL 890A 'C' STUD BASE CHANNEL AROUND INTERIOR OF BUILDING AT ALL WALL PANELS. (SEE NOTE #2) FASTEN WITH ANCHOR AT 4'-0" c/c. (FIELD CUT 'C' STUD BASE CHANNEL AS REQUIRED)
- STEP 3.** INSTALL 840A 'Z' TOP CAP THE PERIMETER OF THE BUILDING TO EXTERIOR WALL PANELS WITH K1237-5 FASTENERS AT CEILING HEIGHT (FIELD CUT 'C' STUD TOP CHANNEL AS REQUIRED)
- STEP 4.** INSTALL 841A 'C' STUDS AT CORNER PANEL RIBS. INSTALL NEXT STUD 8" FROM CORNER PANEL, THEN 16" CENTERS BETWEEN EXTERIOR WALL PANEL RIBS. (SEE SECTION BELOW AND SECTION AT CORNER ON DWG. #C-STUDWALL-2. FASTEN TO 890A AND 840A WITH K1237-5 #12 FASTENERS. ABOVE ALL OPENINGS USE K1324WP FASTENER TO ATTACH TO 890A.
- STEP 5.** IF CEILING SYSTEM IS SUPPLIED WITH BUILDING, INSTALL CEILING AT THIS TIME.
- STEP 6.** INSULATE BETWEEN 'C' STUDS WITH K1313 FIBERGLASS INSULATION.
- STEP 7.** FIELD CUT AND INSTALL 772AAW BASE AND CEILING TRIM.
- STEP 8.** INSTALL FORMED WALL LINER PANELS.

- NOTES:**
- 1 - REFER TO STANDARD ERECTION DRAWINGS FOR BASE CHANNEL, EXTERIOR WALLS, AND ROOF INSTALLATION.
  - 2 - USE 890A 'C' STUD BASE WITH WEDGE ANCHORS. IF ATTACHMENT IS TO A METAL SKID/FLOOR SYSTEM, USE 891A 'C' STUD BASE CHANNEL.
  - 3 - IF (OPTIONAL) CEILING SYSTEM IS PROVIDED INSTALL ON TOP OF 840A 'Z' TOP CAP.
  - 4 - AFTER 'C' STUDWALL HAS BEEN INSTALLED REFER TO DRAWINGS FORMED-1 AND FORMED-2 FOR FINAL INSTALLATION OF FORMED WALL LINER.
  - 5 - SEE DRAWINGS C-STUDWALL-2, C-STUDWALL-3 AND C-STUDWALL-4 FOR STANDARD SECTIONS AND DETAILS.



REVISIONS	BY
06-01-09	CS

**PARKLINE, INC.**  
 P O Box 65 Winfield, WV 25213  
 phone: (304) 586-2113

STANDARD INSTALLATION DETAILS FOR  
'C' STUD WALL SYSTEM

SECTIONS & INSTALLATION INSTR.

DATE	07-21-05
DRAWN BY	RAP
SCALE	NTS
ORDER NO.	
REVISION	1
DWG. NO.	C-STUDWALL-1