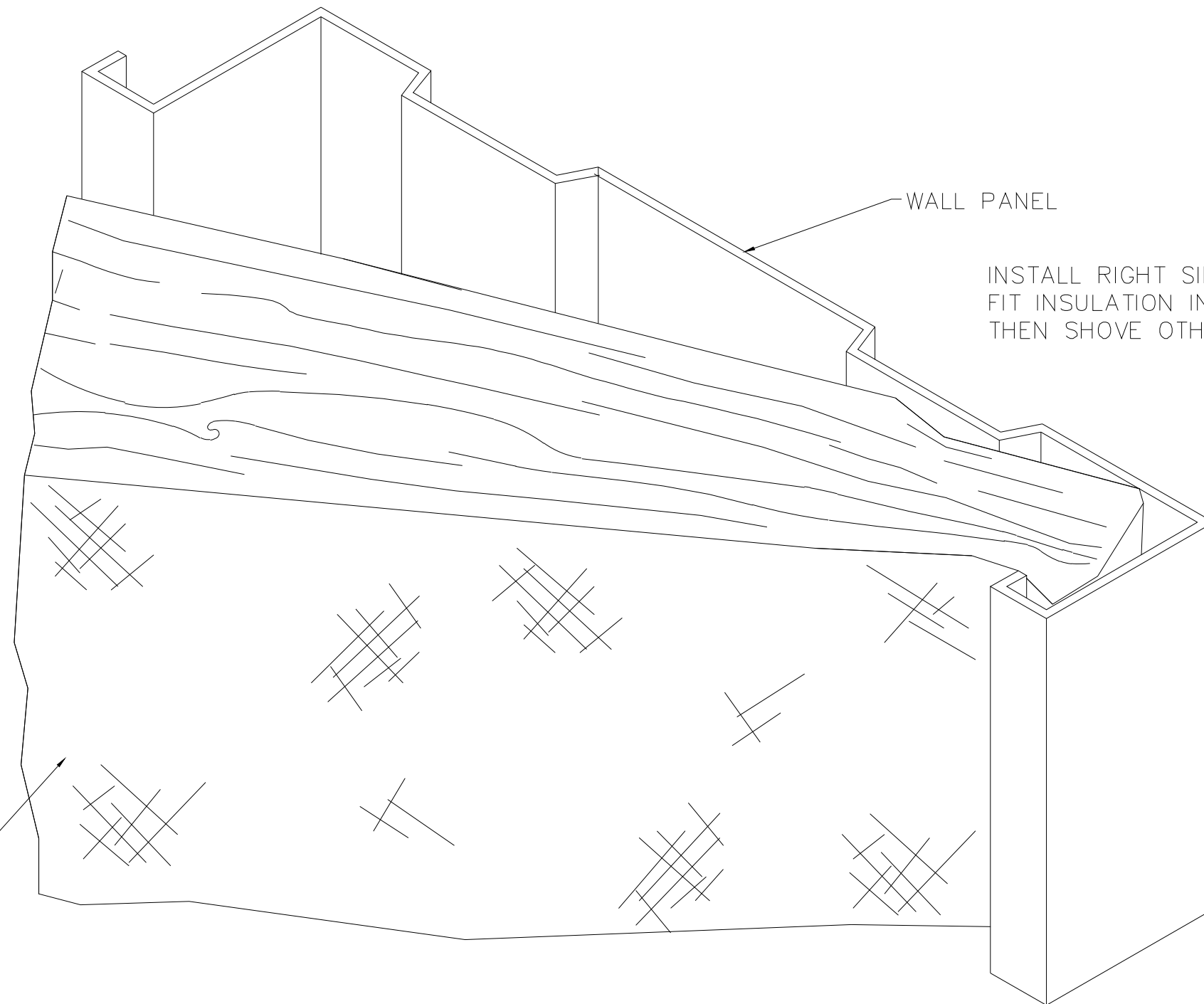


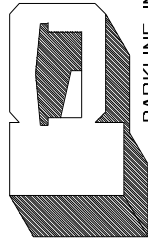
**NOTE:**

INSULATION TO BE FIELD CUT AND  
INSTALLED IN ALL WALL CAVITIES  
INCLUDING DOOR SPACER JAMBS,  
FRAMED OPENING HEADERS AND  
JAMBS WHEN USED.



K1313, R13 UNFACED  
FRICTION-FIT FIBERGLASS  
INSULATION 3½" THICK x 16⅝"  
WIDE x 8'-0" LONG PIECES

REVISIONS	BY
03-20-03	DLR
03-25-09	JMC



**PARKLINE, INC.**  
P O Box 65 Winfield, WV 25213  
phone: (304) 586-2113

JOB DESCRIPTION	FRICION-FIT WALL INSULATION INSTALLATION
SHEET TITLE	DETAIL

DATE	5-18-95
DRAWN BY	CEM
SCALE	NTS
ORDER NO.	
REVISION	2
DWG. NO.	<b>FFW-1</b>