

WALL ELEVATION

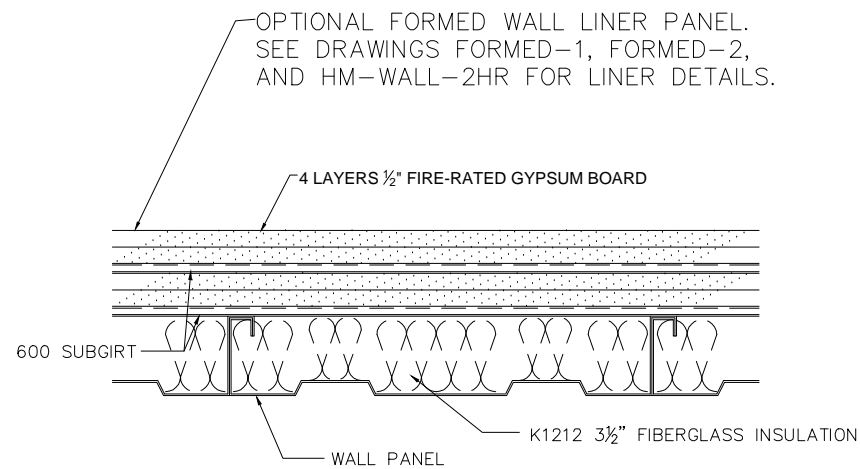
2 HOUR FIREWALL FACTORY MUTUAL WP-150

WALLBOARD IS TO BE 1/2" FIRE-RATED GYPSUM AND SHALL CARRY AN UNDERWRITERS' LABORATORIES LABEL (USG FIRECODE C, TYPE X OR EQUAL)

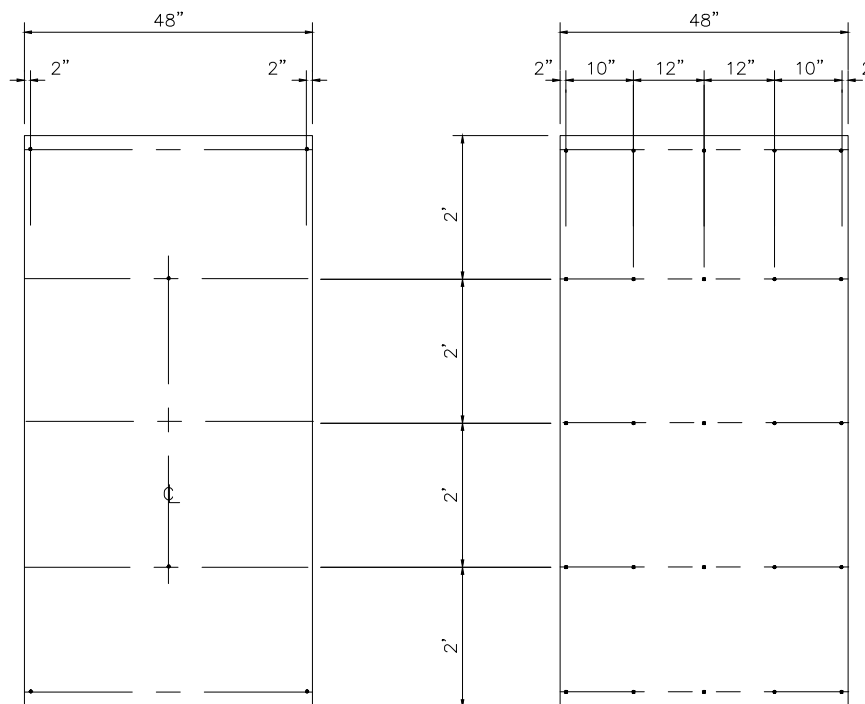
- STEP 1.** AFTER EXTERIOR WALLS ARE ERECTED, INSTALL K1212 3 1/2" FIBERGLASS INSULATION INTO THE PANEL CAVITY, FILLING ALL VOIDS.
- STEP 2.** ATTACH SUBGIRTS TO EACH WALL PANEL RIB (MAXIMUM SPACING 16" O.C.) DIRECTLY ABOVE THE BASE CHANNEL. CONTINUE INSTALLING SUBGIRTS AT 24" C/C SPACING. IF FIREWALL IS TO BE COVERED WITH LINER. THEN A ROW OF SUBGIRTS MUST BE INSTALLED AT CEILING TRIM LOCATION. SEE DRAWING HM-WALL-2HR. FASTEN THE SUBGIRTS TO THE PANEL RIBS WITH K1237-5, #12 x 3/4" SELF-DRILLING FASTENERS. SUBGIRTS SHALL INTERLOCK (TELESCOPED) FOR CONTINUITY.
- STEP 3.** ALL WALLBOARD IS ERECTED VERTICALLY. ATTACH THE FIRST LAYER OF WALLBOARD TO THE SUBGIRTS WITH SIX (6) KHM-DWSA #6 x 1" SELF-DRILLING DRYWALL SCREWS PER SHEET. INSTALL SCREWS 2" FROM EACH EDGE AND 24" FROM THE TOP AND BOTTOM. ALONG THE VERTICAL CENTER-LINE OF THE SHEET, INSTALL AN ADDITIONAL SCREW INTO THE TWO CENTRAL MOST SUBGIRTS (SEE DETAIL).
- STEP 4.** THE SECOND LAYER OF WALLBOARD IS PLACED OVER THE FIRST WITH THE JOINTS STAGGARDED 16" FROM THE FIRST LAYER. ATTACH THE WALLBOARD TO THE SUBGIRTS WITH KHM-DWSC #6 x 1 1/8" SELF-DRILLING DRYWALL SCREWS SPACED 12" O.C. ON EACH LINE SUBGIRTS (SEE DETAIL).
- STEP 5.** INSTALL A SECOND LAYER OF SUBGIRTS HORIZONTALLY OVER THE TWO LAYERS OF WALLBOARD AND ATTACH TO THE PREVIOUS SUBGIRTS WITH KHM-DWSC #6 x 1 1/8" SELF-DRILLING DRYWALL SCREWS AT 16" O.C. OFFSET SCREWS LOCATIONS 8" FROM WALLBOARD JOINTS..
- STEP 6.** PLACE THE THIRD LAYER OF WALLBOARD WITH JOINTS AT THE SUBGIRT SCREWS. ATTACH THE WALLBOARD WITH KHM-DWSA #6 x 1" SELF-DRILLING DRYWALL SCREWS SPACED THE SAME AS THE PREVIOUS LAYERS.
- STEP 7.** THE FOURTH LAYER OF WALLBOARD IS PLACED WITH JOINTS STAGGARDED 16" FROM THE PREVIOUS LAYER. ATTACH WITH KHM-DWSC #6 x 1 1/8" SELF-DRILLING DRYWALL SCREWS SPACED 12" O.C. ON EACH LINE OF SUBGIRTS (SEE DETAIL)

NOTE FOR METAL BUILDINGS WITHOUT METAL WALL LINER:

ALL EXPOSED JOINTS TO BE REINFORCED WITH PAPER TAPE AND FINISHED WITH JOINT COMPOUND. EXPOSED SCREW HEADS TO BE COVERED WITH JOINT COMPOUND.



2 - HOUR FIREWALL



LOCATION OF SCREWS

1st & 3rd LAYER - 2 HOUR WALL

LOCATION OF SCREWS

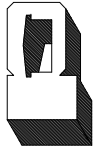
2nd & 4th LAYER - 2 HOUR WALL

METAL STUD PANELS FORM A LOAD BEARING WALL, PROTECTED BY A NON LOAD BEARING GYPSUM FIRE RATED BARRIER.

ANY REVISIONS REQUIRE FMRC APPROVAL PRIOR TO IMPLEMENTATION

REVISIONS	BY

PARKLINE, INC.
 RT. 62, ELEANOR INDUSTRIAL PARK
 ELEANOR, WV 25070
 PHONE: 800-786-4855
 FAX: 304-586-3842
 EMAIL: PARKLINE@PARKLINE.COM
 ENGINEER: TOM HARDING
 THARDING@PARKLINE.COM



JOB DESCRIPTION
**2 HOUR FIREWALL
 DETAILS**

SHEET TITLE
DETAIL

DATE 12-30-05

DRAWN BY DLR

SCALE NTS

ORDER NO.

REVISION

HM-FIRE-2HR