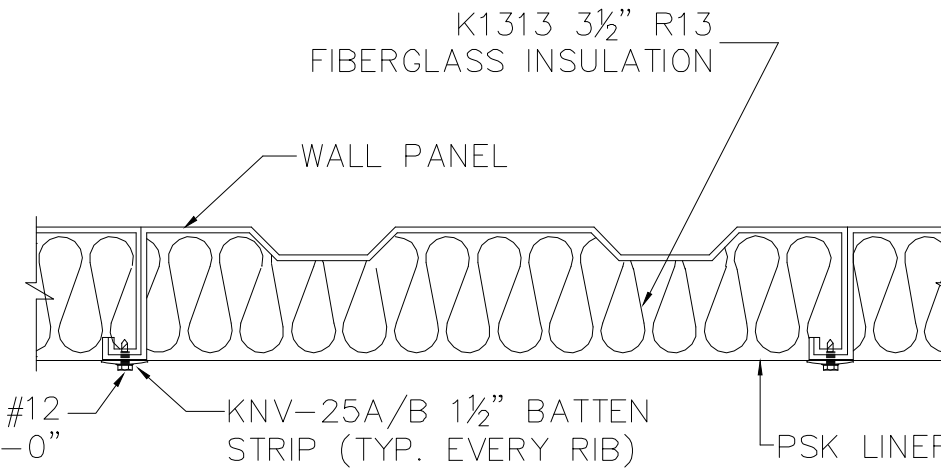
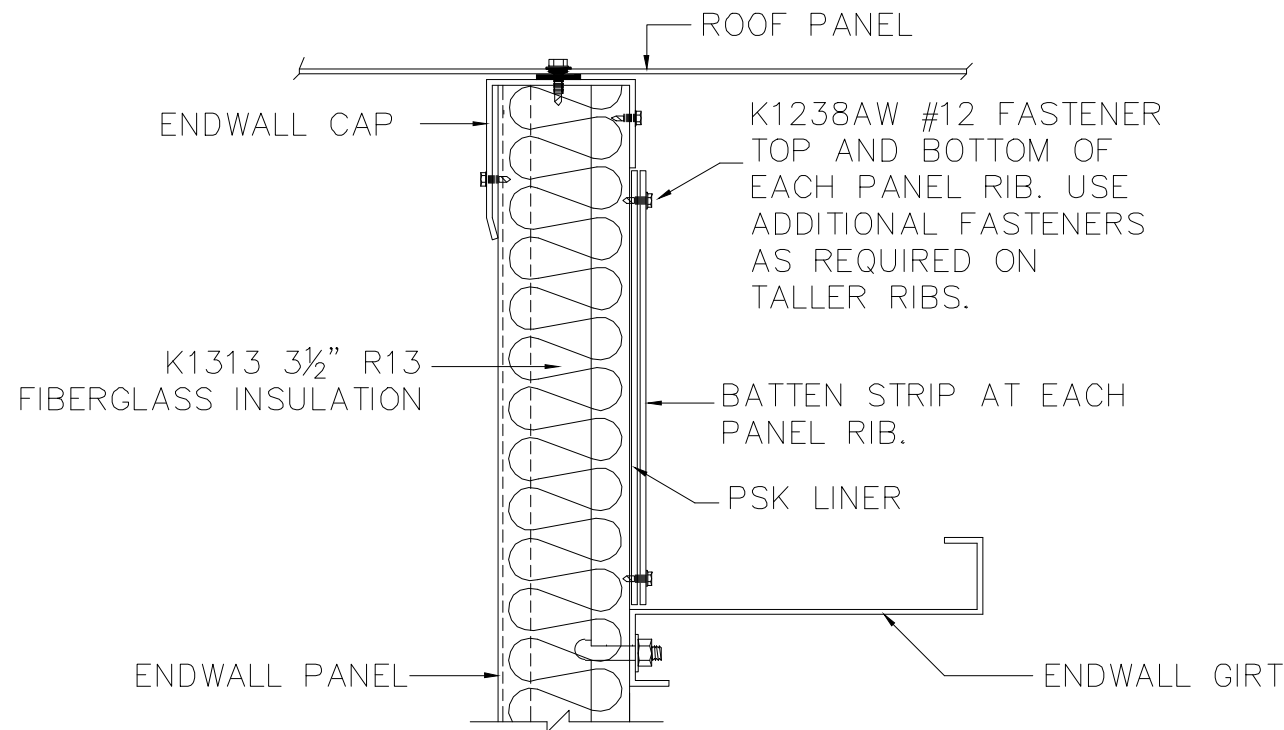


## GABLE LINER

**NOTE:** GABLE LINER IS USED IN TYPE 'AL' BUILDINGS WHEN WALLS ARE INSULATED AND BUILDING DOES NOT USE AN INSULATED CEILING SYSTEM.



## SECTION 'B'-'B'




## SECTION 'A'

### INSTALLATION:

- STEP 1.** INSULATE GABLE AREA WITH K1313 3½" (R13) FIBERGLASS INSULATION.
- STEP 2.** APPLY SMALL PIECES OF DOUBLE SIDED TAPE (PART# DBLSIDETAPE) AT TOP AND BOTTOM OF EACH GABLE PANEL RIB.
- STEP 3.** THE (PART# KWMP-50) PSK LINER SHEET IS 54" WIDE. BEGIN BY CUTTING A FULL WIDTH SECTION OF PSK SHEET BY BUILDING WIDTH SO LINER SHEET CAN BE INSTALLED HORIZONTALLY.
- STEP 4.** SMOOTH AND PULL TIGHT AND TEMPORARILY ATTACH THE PSK LINER SHEET TO THE DOUBLE SIDED TAPE.
- STEP 5.** THE KNV-25A/B 1½" BATTEN STRIPS ARE PROVIDED IN 8'-0" (PART A) AND 12'-0" (PART B) LENGTHS. FIELD CUT THE 1½" BATTEN STRIPS TO LENGTH'S REQUIRED FOR EACH GABLE PANEL RIB.
- STEP 6.** ATTACH BATTEN STRIPS WITH A MINIMUM OF TWO K1238AW FASTENERS, ONE TOP AND ONE BOTTOM. NOTE: IF BUILDING USES A GABLE LOUVER, CUT AROUND LOUVER AND ATTACH PSK LINER WITH BATTEN STRIPS AT EDGES OF LOUVER.
- STEP 7.** CUT PSK LINER SHEET AT TOP FOLLOWING BUILDING SLOPE AND BOTTOM USING THE ENDWALL GIRT AS A GUIDE.

REVISIONS	BY



**PARKLINE, INC.**  
P. O. Box 65 Winfield, WV 25213  
phone: (304) 586-2113

JOB DESCRIPTION	POLYPROPYLENE SKRIM KRAFT (PSK) GABLE LINER/ INSULATION SYSTEM
	SHEET TITLE
INSTALLATION DETAILS	

DATE	1-24-08
DRAWN BY	BAS
SCALE	NTS
ORDER NO.	
REVISION	0
DWG. NO.	
<b>PSK-GABLE</b>	