

ADJUSTABLE WALL LOUVERS

PRODUCT DESCRIPTION

ADJUSTABLE LOUVERS

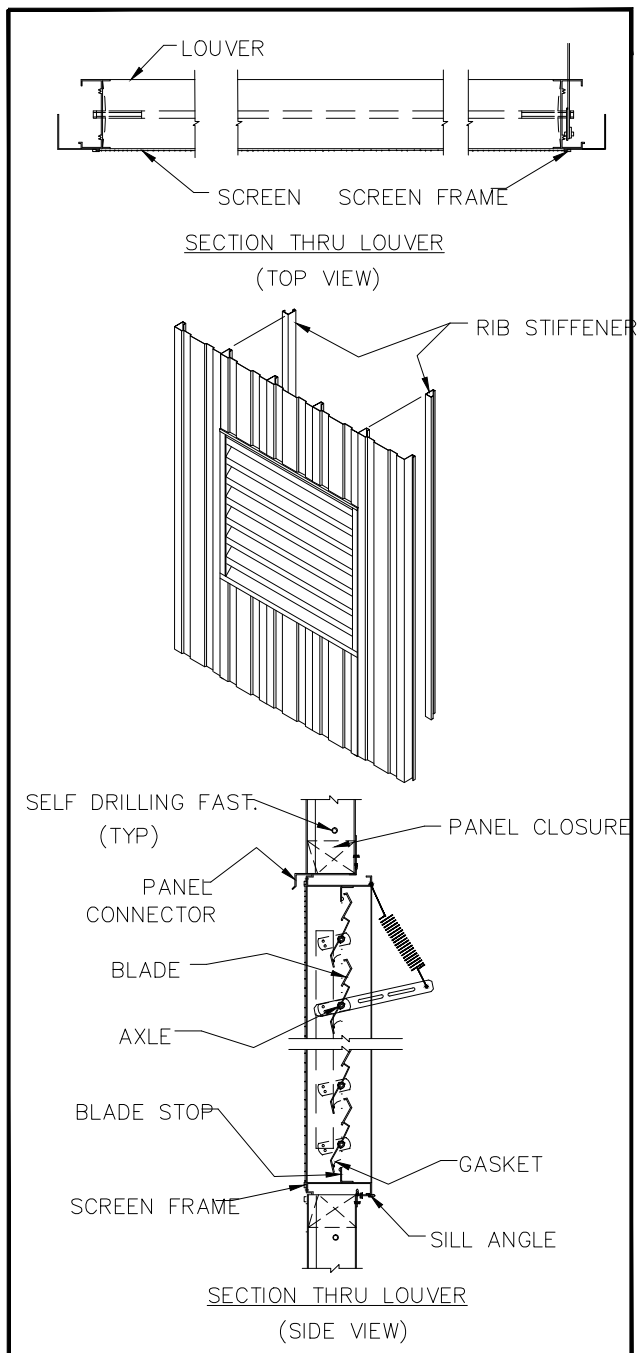
Adjustable louvers shall be of self framing design. The louver frame shall be of nominal 14 gauge formed aluminum and the louver blades shall be nominal 12 gauge extruded aluminum. Finish shall be natural mill finish and shall not require field painting.

Blades shall be pivoted on 1/2" diameter aluminum pivot pins through nylon flanged bearings and operated by means of a pull bar operating handle. All louvers shall be complete with an exterior mounted 18-14 aluminum mesh insect screen.

NOTE: Designer must specify louver sill height. Minimum sill or head height is 6".

Available Sizes:

16" wide x 24" high (181 sq. in. free area)
 32" wide x 24" high (406 sq. in. free area)
 48" wide x 42" high (1160 sq. in. free area)



PRODUCT NAME

Adjustable Wall Louvers

MANUFACTURER

Parkline, Inc.
 P.O. Box 65
 Winfield, West Virginia 25213
 Phone: (304) 586-2113 in WV
 (800) 786-4855 outside WV
 (304) 586-3842 FAX

web: <http://www.parkline.com>
 E-mail: parkline@parkline.com

Options : 1. - Removable filters
 2. - Motor operator - Available in
 12 or 24 volt DC
 or 110/220 volt AC

 **PARKLINE, INC.**
13122AL