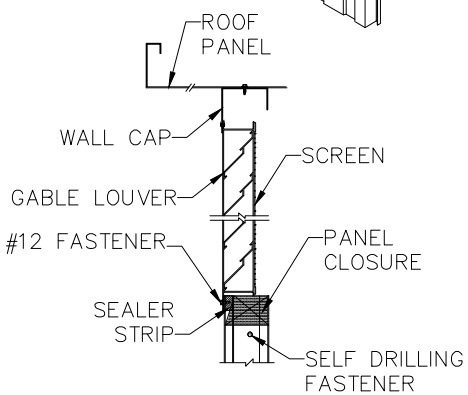
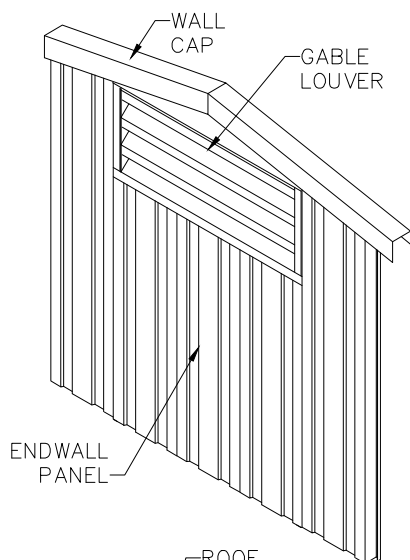


**SECTION THRU LOUVER
(TOP VIEW)**



**SECTION THRU LOUVER
(SIDE VIEW)**

GABLE LOUVER

PRODUCT DESCRIPTION

GABLE LOUVER

Gable louvers shall be fixed blade type with blades set on a 45 degree slope. Blades and frames shall be 14 gauge, extruded aluminum with natural mill finish. Louvers shall include 18-14 aluminum mesh insect screens.

Available sizes:

- 16" WIDE x 10" HIGH (48 SQ. IN. FREE AREA)
- 32" WIDE x 6" HIGH (37 SQ. IN. FREE AREA)
- 32" WIDE x 12" HIGH (130 SQ. IN. FREE AREA)
- 48" WIDE x 12" HIGH (198 SQ. IN. FREE AREA)

PRODUCT NAME

Gable Louver

MANUFACTURER

Parkline, Inc.
 P.O. Box 65
 Winfield, West Virginia 25213
 Phone: (304) 586-2113 in WV
 (800) 786-4855 outside WV
 (304) 586-3842 FAX
 web: <http://www.parkline.com>
 E-mail: parkline@parkline.com

