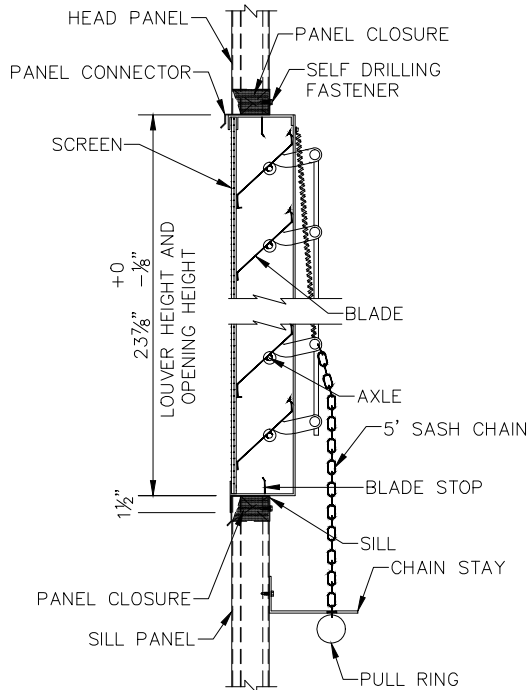
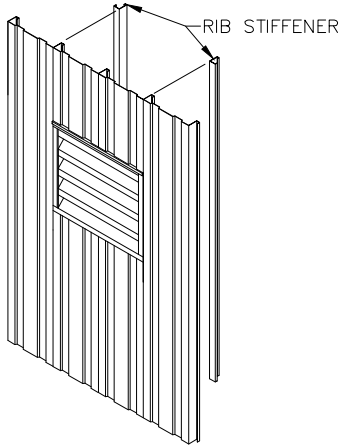


SECTION THRU LOUVER
(TOP VIEW)



SECTION THRU LOUVER
(SIDE VIEW)

32" x 24" ADJUSTABLE WALL LOUVER

PRODUCT DESCRIPTION

ADJUSTABLE WALL LOUVER
32" wide x 24" high
(406 Sq. In. free area)

32" X 24" adjustable louvers shall be of self framing design. The louver frame shall be of nominal 14 gauge formed aluminum and the louver blades shall be of nominal 12 gauge extruded aluminum. Finish shall be natural mill finish and shall not require field painting.

Blades shall be pivoted on 1/2" diameter aluminum pivot pins through nylon flanged bearings and operated by means of a pull bar operating handle. All louvers shall be complete with an 18-14 aluminum mesh insect screen.

NOTE: Specify louver sill height. Minimum sill or head height is 0'-6"

NOTE : Refer to Floor Plan and Elevation Drawing for exact size and location of accessories.