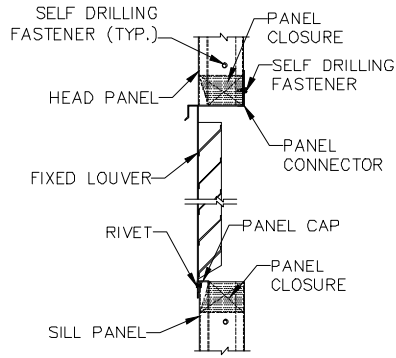
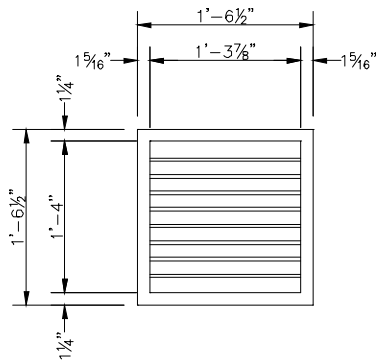


FIXED LOUVER



SECTION THRU LOUVER
(SIDE VIEW)



FREE AIR = 144 SQ. IN.

PRODUCT DESCRIPTION

FIXED LOUVER

Fixed louvers shall be of nominal 26 gauge, G90 galvanized steel, general purpose type of self framing design with free area of 75 Sq. Inches. Finish shall be bright galvanized. All louvers shall be complete with #8 insect screen.

SIZE: 16" wide x 16" high

- NOTES:
1. - Refer to Floor Plan and Elevation Drawing for exact size and location of accessories.
 2. - Specify louver sill height. Minimum sill or head height is 6"