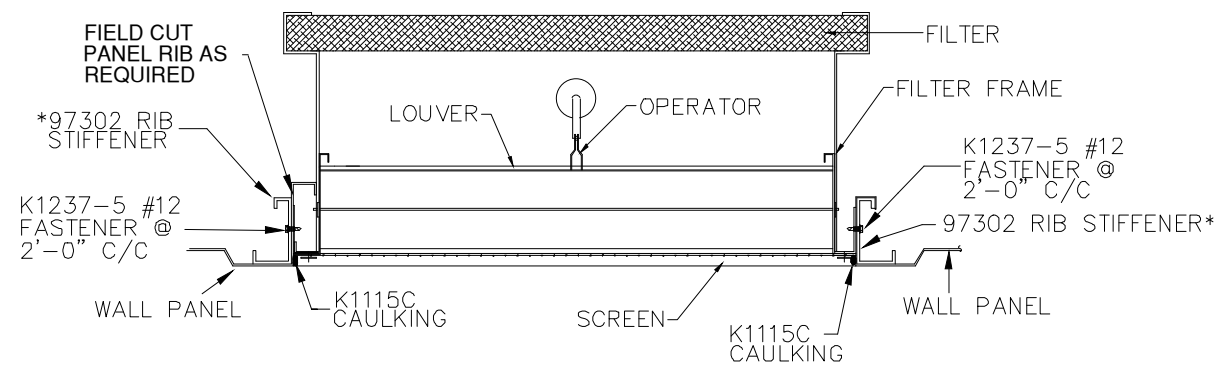
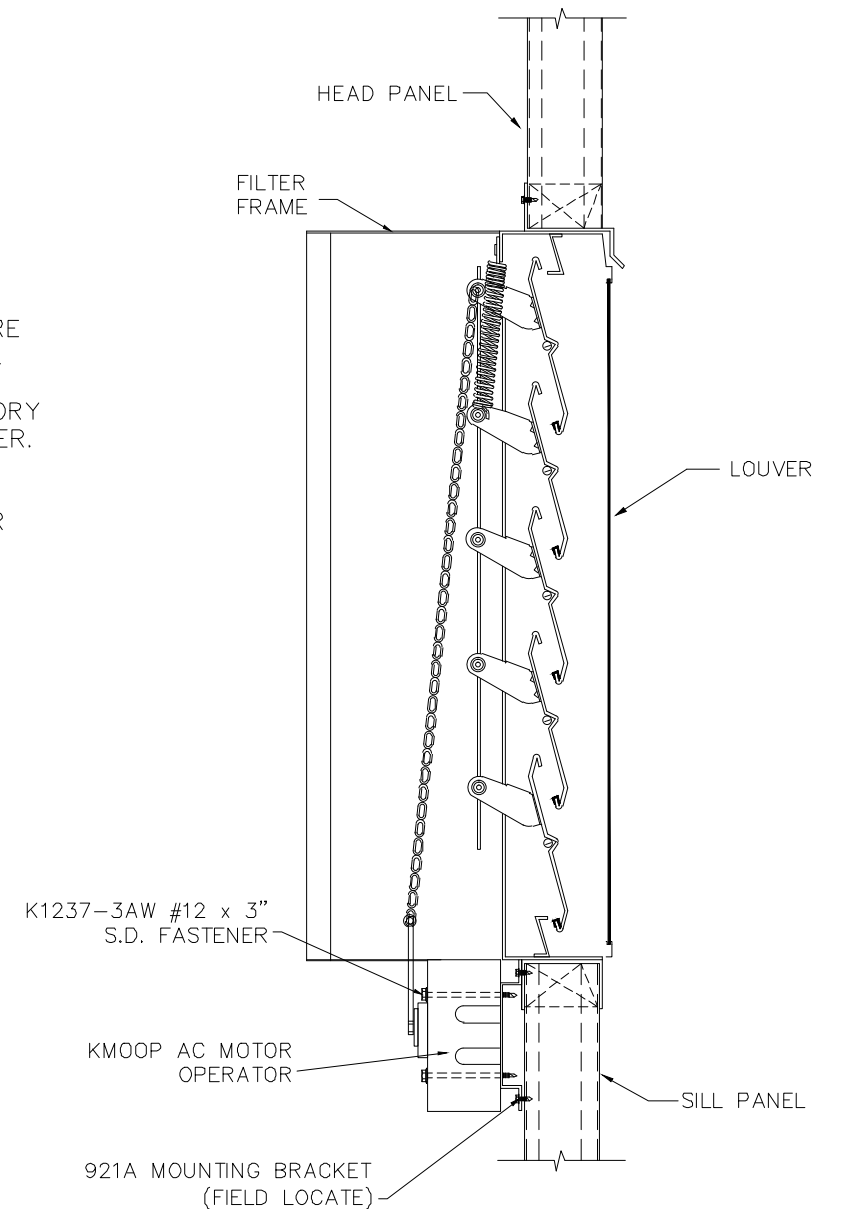


- NOTES:**
- 1.) INSTALL LOUVER IN WALL PER STANDARD INSTALLATION DETAILS (SEE DWG. #LVR-A)
 - 2.) 16" x 24" LOUVER SHOWN. DETAILS ARE THE SAME FOR OTHER LOUVER SIZES.
 - 3.) FILTER FRAME AND FILTER ARE FACTORY ASSEMBLED AND ATTACHED TO LOUVER.
 - 4.) REMOVE FILTER TO GAIN ACCESS TO LOUVER FOR INSTALLATION OF MOTOR OPERATOR.



* RIB STIFFENERS NOT REQUIRED ON 16" x 24" LOUVER IN AN 8'-0" WALL HEIGHT. SEE DRAWING #LVR-A.

REVISIONS	BY
11-6-08	BAS

PARKLINE, INC.
 P O Box 65 Winfield, WV 25213
 phone: (304) 586-2113

ADJUSTABLE WALL LOUVER WITH AC POWERED MOTOR OPERATOR AND REMOVABLE FILTER

INSTALLATION DETAILS

DATE	11-28-06
DRAWN BY	BHKJ
SCALE	N.T.S
ORDER NO.	60646
REVISION	1
DWG. NO.	LVR-AC-MO-FIL