

# WALL OPENING KITS

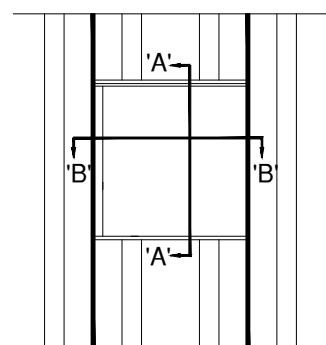
## PRODUCT DESCRIPTION

### WALL OPENING KIT

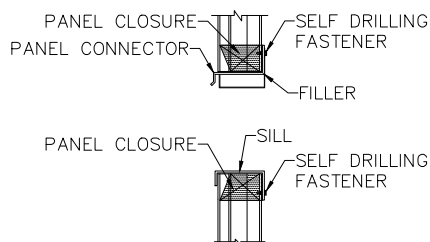
All necessary framing and connectors to structurally replace the panels removed by wall opening. All trim and flashings required to make a unit placed in the opening weathertight, shall be provided by the supplier of the unit being installed.

Standard Widths :

- 1'-4"
- 2'-8"
- 4'-0"
- 5'-4"
- 6'-8"

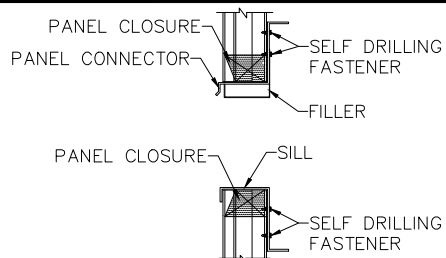


**EXTERIOR ELEVATION**



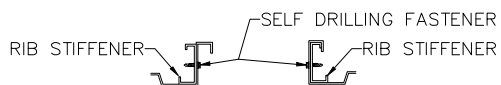
**SECT. 'A'-'A'**

(FOR 1'-4", 2'-8", 4'-0" WIDE)



**SECT. 'A'-'A'**

(FOR 5'-4", 6'-8" WIDE)



**SECT. 'B'-'B'**

### PRODUCT NAME

WALL OPENING KIT

### MANUFACTURER

Parkline, Inc.

P.O. Box 65

Winfield, West Virginia 25213

Phone: (304) 586-2113 in WV

(800) 786-4855 outside WV

(304) 586-3842 FAX

web: <http://www.parkline.com>

E-mail: [parkline@parkline.com](mailto:parkline@parkline.com)



**PARKLINE, INC.**

**13122WOK**