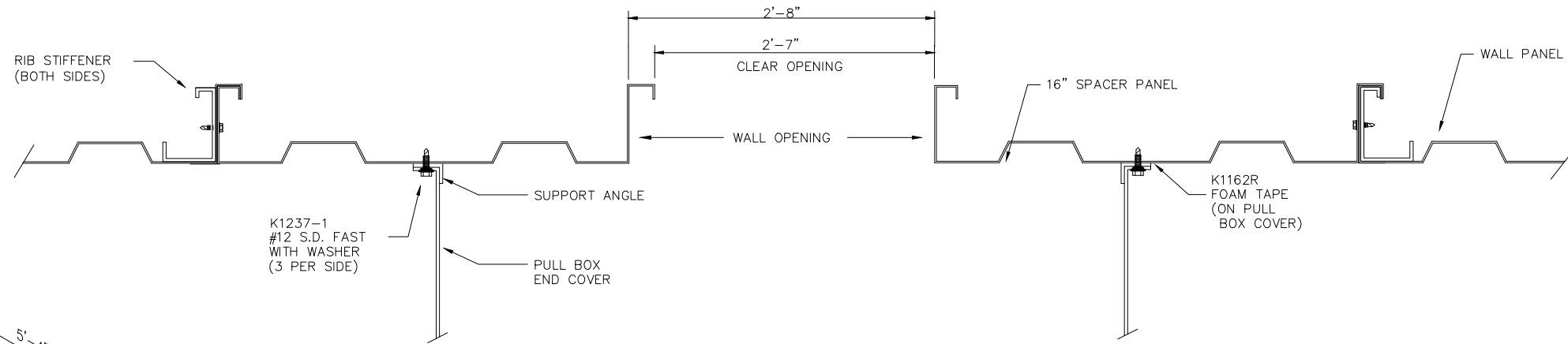
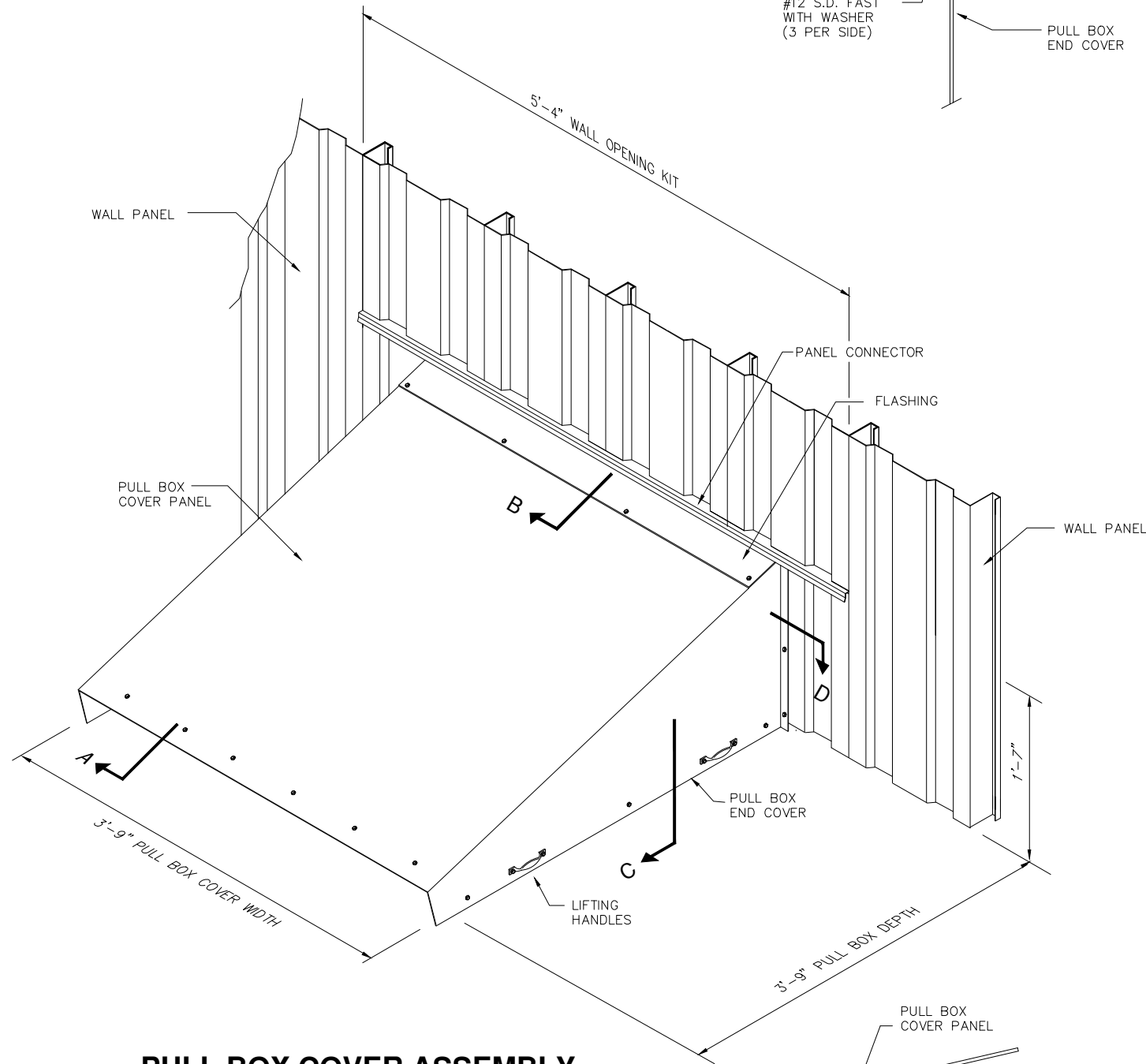


NOTE:

PULL BOX COVER IS DESIGNED TO REST ON CONCRETE PULL BOX WITHOUT ANY PHYSICAL ATTACHMENT EXCEPT FOR THAT SHOWN IN SECTION "D". TO PREVENT DAMAGE DUE TO HIGH WINDS PARKLINE RECOMMENDS SOME TYPE OF ATTACHMENT BE MADE AT ENDS OR LOW SIDE.

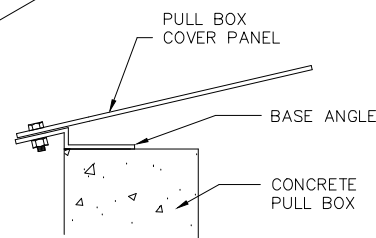


SECTION - D

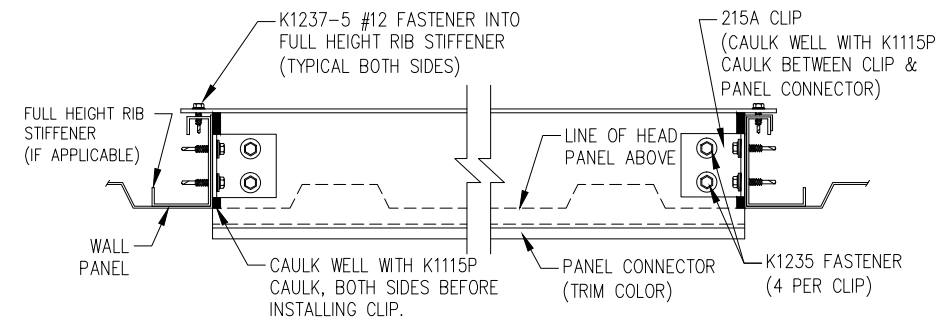


PULL BOX COVER ASSEMBLY

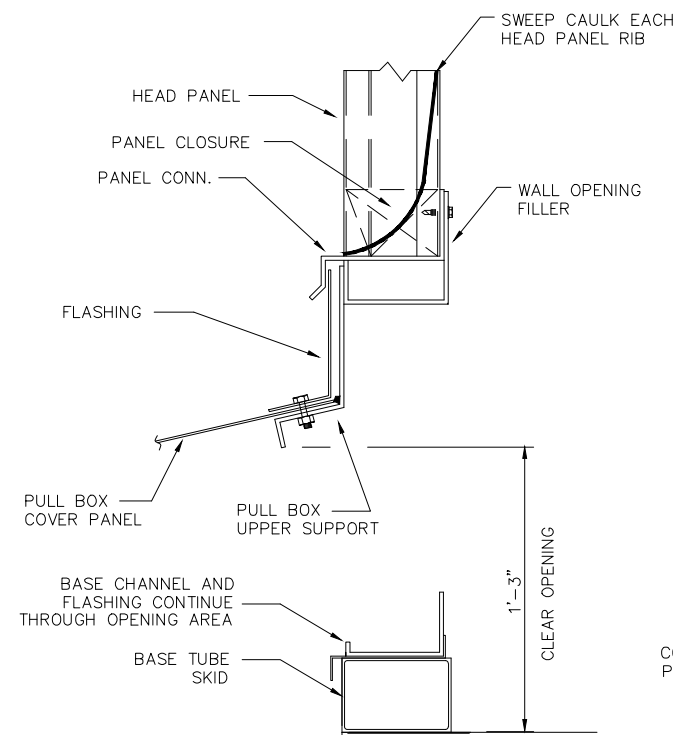
TOTAL WEIGHT = 103#



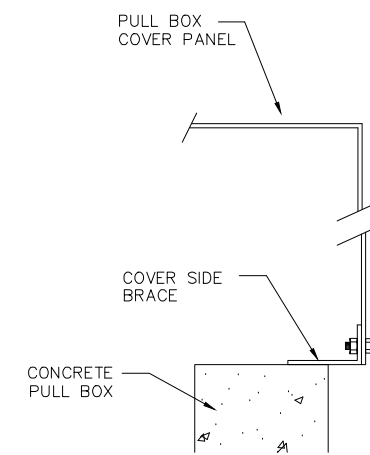
SECTION - A



TYPICAL SECTION @ PANEL CONNECTOR



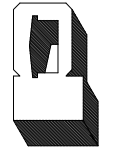
SECTION - B



SECTION - C

REVISIONS	BY
02-26-03	DLR
03-25-03	DLR
05-14-03	RAP
02-18-04	RAP
01-06-05	WBD
02-28-12	TLC

PARKLINE, INC.
 RT. 62, ELEANOR INDUSTRIAL PARK
 ELEANOR, WY 25070
 EMAIL: PARKLINE@PARKLINE.COM
 PHONE: 800-786-4855
 FAX: 304-586-3842
 ENGINEER: TOM HARDING
THARDING@PARKLINE.COM



JOB DESCRIPTION
PULL BOX COVER FOR BUILDING WITH 3" TUBE SKID

SHEET TITLE
SECTIONS AND DETAILS

DATE	04-05-01
DRAWN BY	DLR
SCALE	NTS
ORDER NO.	
REVISION	6

PULLBOX-1