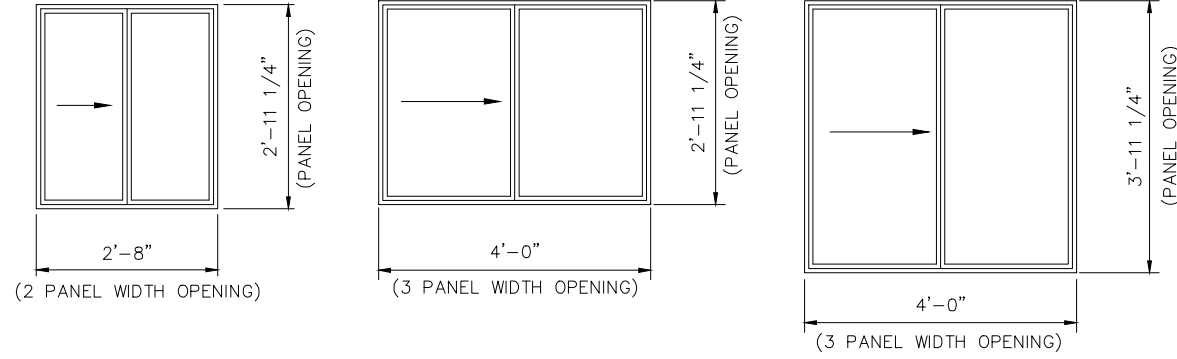


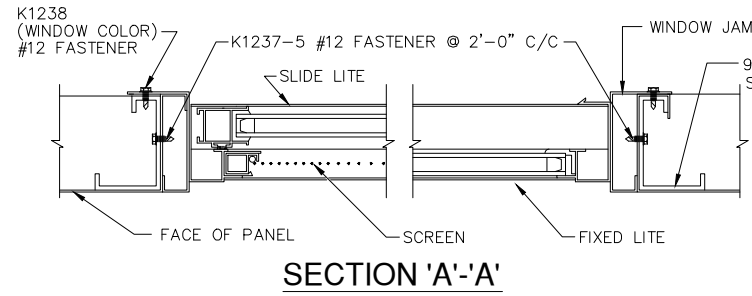
STANDARD HORIZONTAL SLIDING WINDOWS



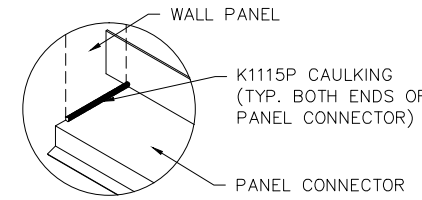
2830

4030

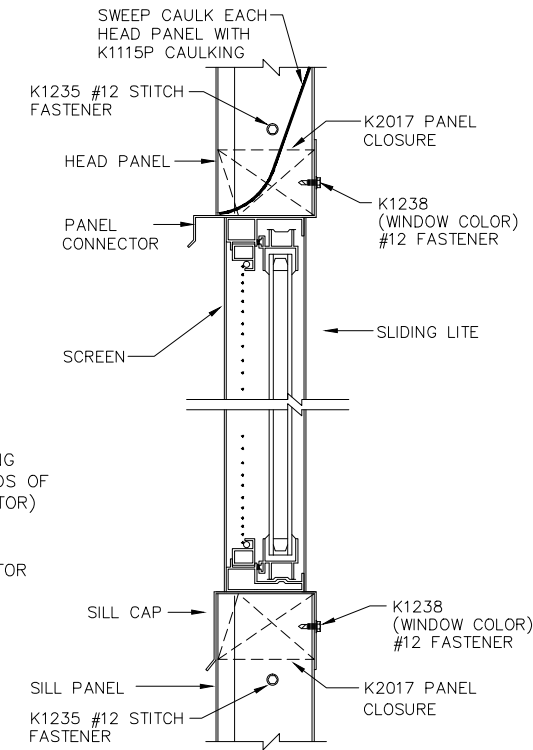
4040



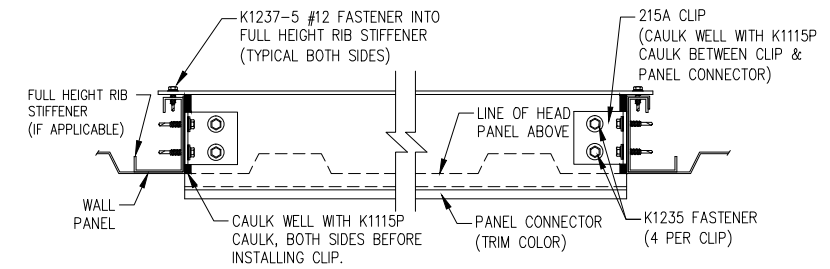
SECTION 'A'-A'



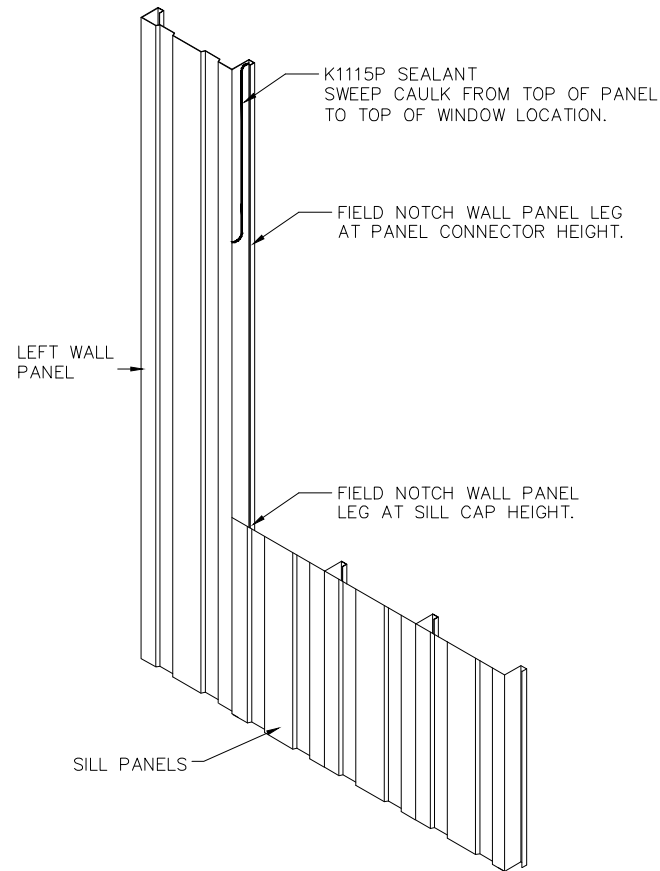
CAULKING DETAIL



SECTION 'B'-B'

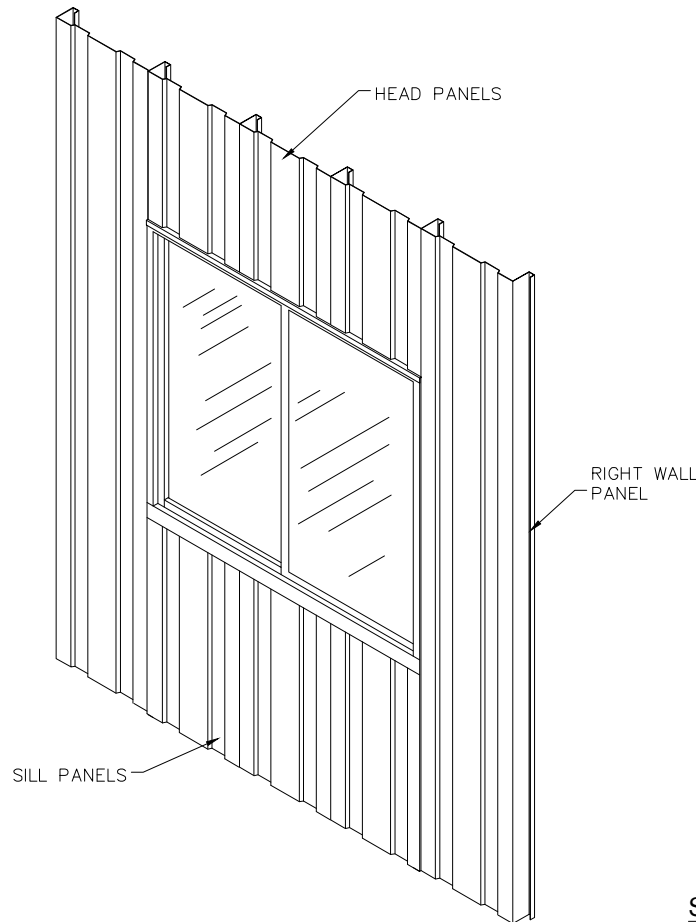


TYPICAL SECTION @ PANEL CONNECTOR



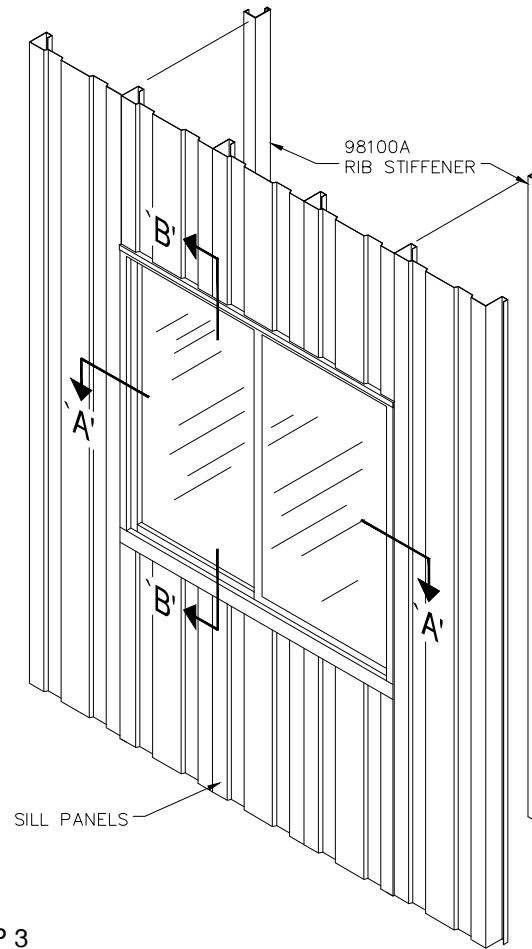
STEP '1'

AT DESIRED WINDOW LOCATION, INSTALL SILL PANELS. FIELD NOTCH LEFT WALL PANEL RIB AT PANEL CONNECTOR AND SILL CAP HEIGHTS. SWEEP CAULK LEFT WALL PANEL RIB AS SHOWN.



STEP '2'

PLACE WINDOW UNIT IN WALL. SWEEP CAULK EACH HEAD PANEL RIB AND INSTALL. SWEEP CAULK RIB OF LAST HEAD PANEL BEFORE INSTALLING THE RIGHT WALL PANEL.



STEP 3

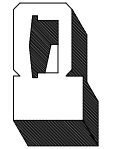
MAKE SURE WINDOW IS SQUARE AND PLUMB. INSTALL RIB STIFFENERS AND FASTEN AS SHOWN IN **SECTION 'A-A'**. ATTACH WINDOW TO PANELS AS SHOWN IN **SECTION 'A-A'** AND **SECTION 'B-B'**. ATTACH HEAD AND SILL PANEL RIBS TOGETHER WITH K1235 STITCH FASTENERS AT 16" C/C (MINIMUM OF 2 PER RIB). CAULK EACH END OF PANEL CONNECTOR AT LEFT AND RIGHT WALL PANEL RIBS AS SHOWN IN **CAULKING DETAIL**. FACE CAULK JOINT BETWEEN WALL PANEL AND WINDOW FRAME WITH K1115C CLEAR CAULK. TAKE CARE TO MAINTAIN FINISHED APPEARANCE.

NOTES:

- HORIZONTAL SLIDING WINDOWS COME FACTORY ASSEMBLED AND INCLUDES GLAZING, SCREEN AND INTEGRAL FRAME.
- WINDOWS ARE AVAILABLE IN ARCTIC WHITE OR ROMAN BRONZE FINISH AND MATCH STANDARD TRIM COLORS.
 - 5/8" INSULATED GLASS (STANDARD)
 - 1/4" POLISHED (CLEAR) WIRE
 - 1/4" POLYCARBONATE
 - 1/4" ACRYLIC
 - 1/4" TEMPERED
- GLAZING OPTIONS INCLUDE:

REVISIONS	BY
01-23-03	CBP
02-26-03	DLR
01-26-04	DLR
03-08-11	TLC
03-30-11	TLC
02-23-12	TLC

PARKLINE, INC.
 RT. 62, ELEANOR INDUSTRIAL PARK
 ELEANOR, WY 25070
 EMAIL: PARKLINE@PARKLINE.COM
 PHONE: 800-786-4855
 FAX: 304-586-3842
 ENGINEER: TOM HARDING
 THARDING@PARKLINE.COM



JOB DESCRIPTION
HORIZONTAL SLIDING WINDOW INSTALLATION

SHEET TITLE
SECTIONS AND DETAILS

DATE	5-2-00
DRAWN BY	DLR
SCALE	NTS
ORDER NO.	
REVISION	6

WINDO-SLD